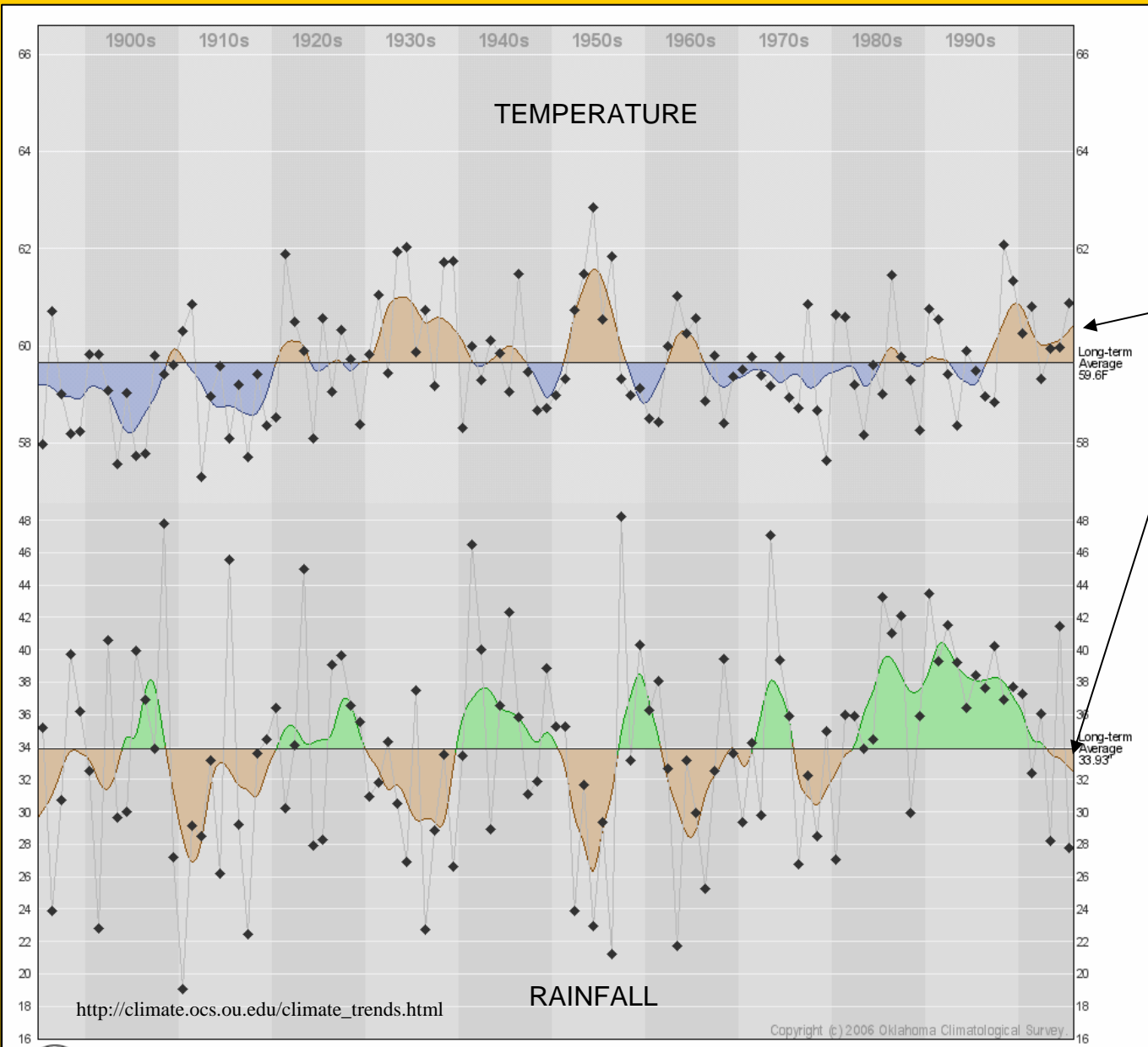


**OKLAHOMA**  
CLIMATOLOGICAL SURVEY

**Annual Rainfall History with 5-yr Weighted Trends**  
**Climate Division 10 (Statewide): 1895-2005**

- Wetter historical periods
- Drier historical periods





THE TREND IS TOWARDS HOTTER, DRIER CLIMATE CONDITIONS

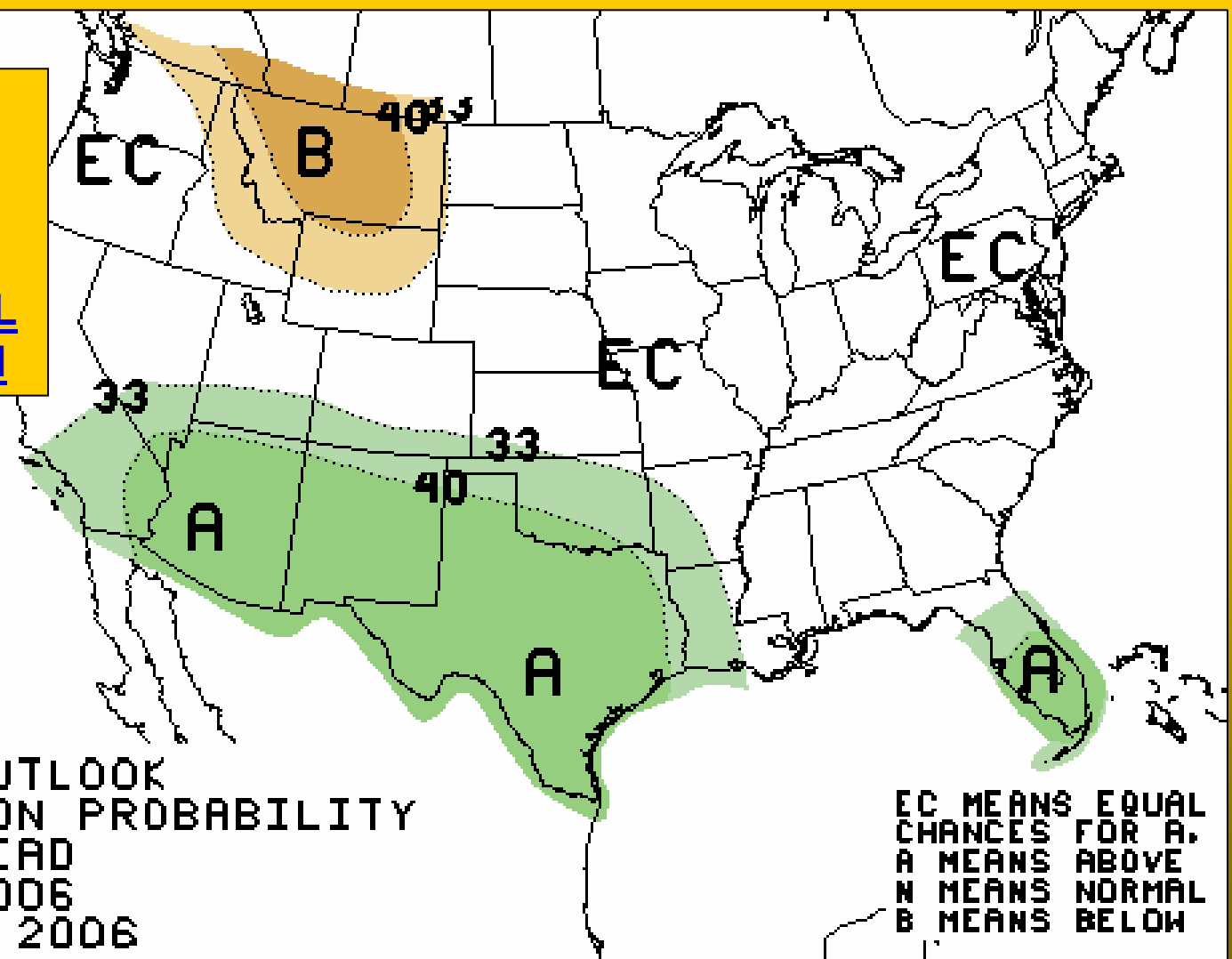
COMPARE THIS TO THE 1930 AND 1950 DECADES

[http://climate.ocs.ou.edu/climate\\_trends.html](http://climate.ocs.ou.edu/climate_trends.html)

Copyright (c) 2006 Oklahoma Climatological Survey

**NOAA  
DECEMBER  
FORECAST:**

**ABOVE NORMAL  
PRECIPITATION**



ONE-MONTH OUTLOOK  
PRECIPITATION PROBABILITY  
0.5 MONTH LEAD  
VALID DEC 2006  
MADE 16 NOV 2006

EC MEANS EQUAL  
CHANCES FOR A.  
A MEANS ABOVE  
N MEANS NORMAL  
B MEANS BELOW



Water Year: Oct 1, 2006 through November 28, 2006

Climate Division	Total Rainfall	Departure from Normal	Pct of Normal	Driest since	Wettest since	Rank since 1921 (85 periods)
Central	3.80"	-2.48"	60%	1999 (2.83")	2004 (11.13")	27th driest
Southeast	8.89"	-0.80"	92%	2003 (6.87")	2004 (13.30")	32nd wettest

Autumn 2006: September 1, 2006 through November 28, 2006

Climate Division	Total Rainfall	Departure from Normal	Pct of Normal	Driest since	Wettest since	Rank since 1921 (85 periods)
Central	6.20"	-4.19"	60%	1980 (4.59")	2004 (12.02")	20th driest
Southeast	12.14"	-2.12"	85%	2003 (11.54")	2004 (14.56")	42nd wettest



## Oklahoma Climatological Survey: Drought Monitoring Tools

[http://climate.ocs.ou.edu/rainfall\\_update.html](http://climate.ocs.ou.edu/rainfall_update.html)

## DROUGHT INDICES

Palmer Drought Severity Index <sup>1</sup>					Standardized Precipitation Index <sup>2</sup> Through October 2006			
CLIMATE DIVISION (#)	CURRENT STATUS 11/18/2006	VALUE		CHANGE IN VALUE	3-MONTH	6-MONTH	9-MONTH	12-MONTH
		11/18	10/21					
Northwest (1)	MOIST SPELL	1.04	1.39	-0.35	MODERATELY WET	NEAR NORMAL	NEAR NORMAL	NEAR NORMAL
North Central (2)	SEVERE DROUGHT	-3.65	-3.83	0.18	MODERATELY DRY	VERY DRY	VERY DRY	VERY DRY
Northeast (3)	SEVERE DROUGHT	-3.66	-4.55	0.89	MODERATELY DRY	VERY DRY	MODERATELY DRY	VERY DRY
West Central (4)	MILD DROUGHT	-1.68	-1.82	0.14	NEAR NORMAL	NEAR NORMAL	NEAR NORMAL	NEAR NORMAL
Central (5)	MODERATE DROUGHT	-2.73	-3.22	0.49	NEAR NORMAL	NEAR NORMAL	NEAR NORMAL	VERY DRY
East Central (6)	MILD DROUGHT	-1.59	-2.78	1.19	NEAR NORMAL	MODERATELY DRY	MODERATELY DRY	VERY DRY
Southwest (7)	NEAR NORMAL	-0.21	-0.09	-0.12	MODERATELY WET	NEAR NORMAL	NEAR NORMAL	MODERATELY DRY
South Central (8)	MILD DROUGHT	-1.99	-2.29	0.30	NEAR NORMAL	MODERATELY DRY	MODERATELY DRY	VERY DRY
Southeast (9)	INCIPIENT MOIST SPELL	0.56	-1.22	1.78	NEAR NORMAL	NEAR NORMAL	NEAR NORMAL	MODERATELY DRY

- Six climate divisions are currently experiencing drought conditions.
- Only two climate divisions have undergone PDSI moisture decreases since October 21.

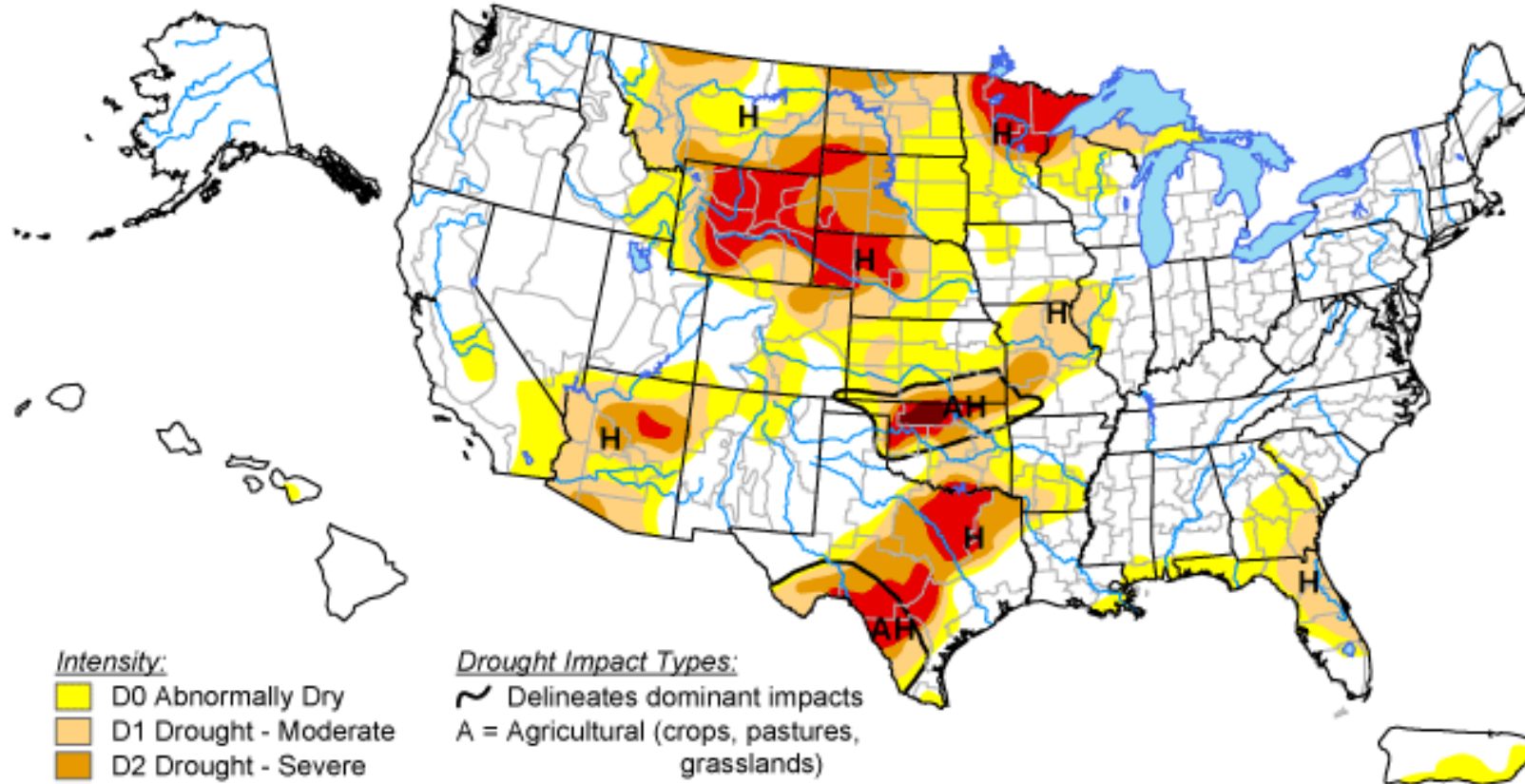


<http://www.owrb.state.ok.us/supply/drought/bulletin.php>








# U.S. Drought Monitor


November 21, 2006  
Valid 7 a.m. EST



Intensity:

-  D0 Abnormally Dry
-  D1 Drought - Moderate
-  D2 Drought - Severe
-  D3 Drought - Extreme
-  D4 Drought - Exceptional

Drought Impact Types:

-  Delineates dominant impacts
- A = Agricultural (crops, pastures, grasslands)
- H = Hydrological (water)

The Drought Monitor focuses on broad-scale conditions.  
Local conditions may vary. See accompanying text summary  
for forecast statements.

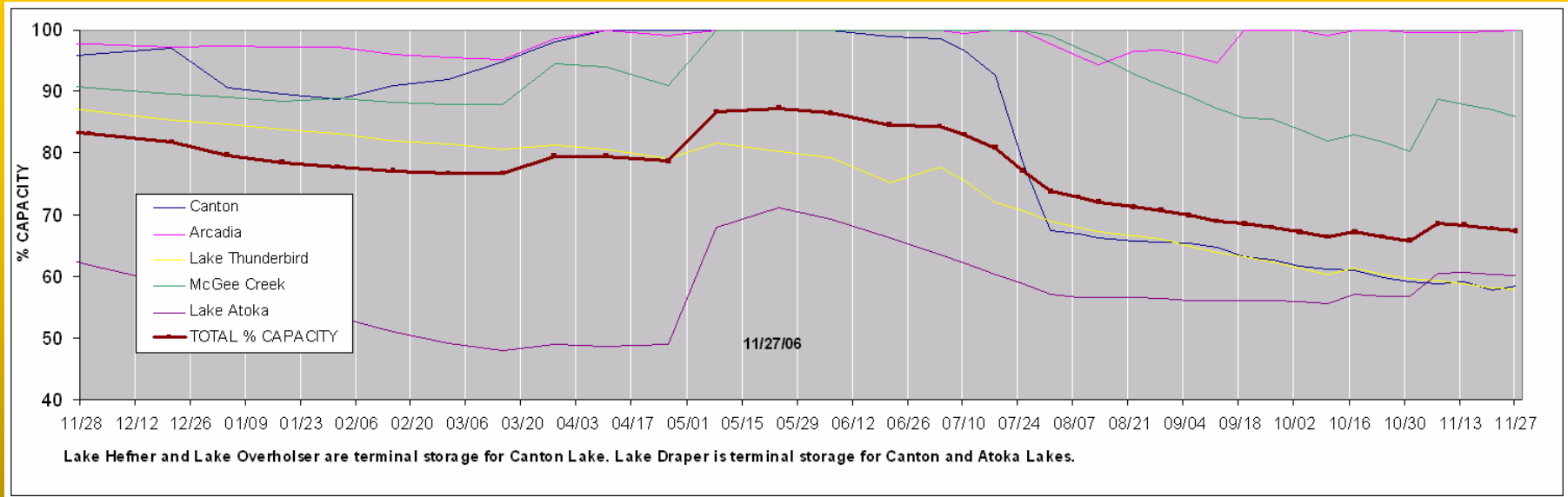


Released Wednesday, November 22, 2006

Author: Ned Guttman/Liz Love-Brotak, NOAA/NESDIS/NCDC

<http://drought.unl.edu/dm>

## Percent of Surface Water Conservation Storage Central OK Reservoirs



	% CAPACITY	% WEEKLY CHANGE
Canton	58.3	0.5
Arcadia	100.0	0.3
Lake Thunderbird	58.0	-0.2
McGee Creek	86.0	-1.1
Lake Atoka	60.1	-0.2
TOTAL % CAPACITY	67.5	-0.2



