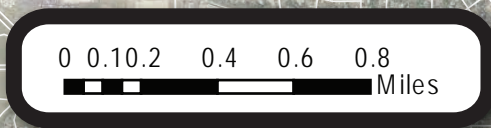
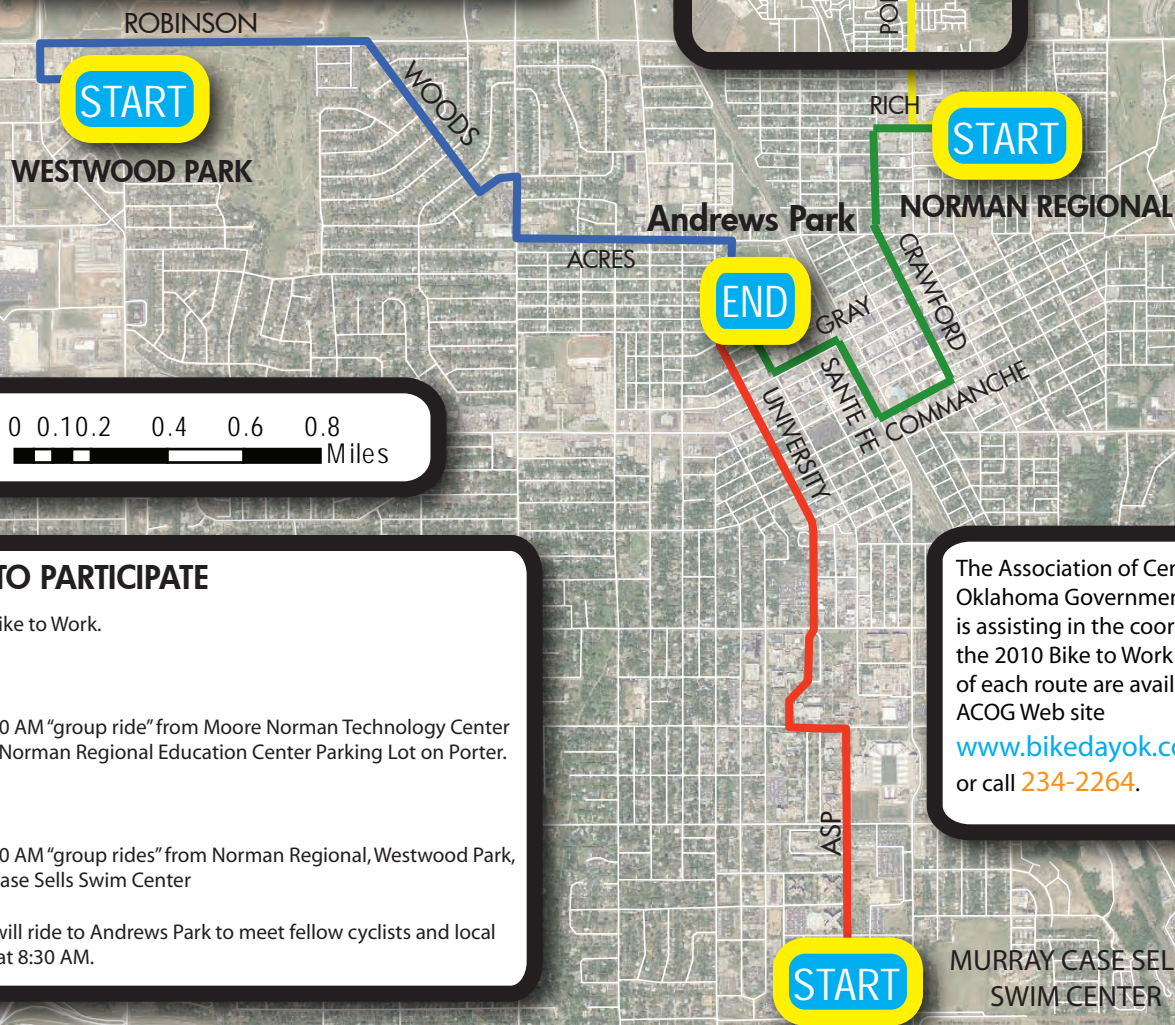


CENTRAL
**BIKE TO
WORK**



OKLAHOMA
**MAY 21
2010**



WAYS TO PARTICIPATE

Ride your bike to Work.

OR

Join the 7:30 AM "group ride" from Moore Norman Technology Center and ride to Norman Regional Education Center Parking Lot on Porter.

OR

Join the 8:00 AM "group rides" from Norman Regional, Westwood Park, or Murray Case Sells Swim Center

All groups will ride to Andrews Park to meet fellow cyclists and local dignitaries at 8:30 AM.

The Association of Central Oklahoma Governments (ACOG) is assisting in the coordination of the 2010 Bike to Work Day. Maps of each route are available at the ACOG Web site

www.bikedayok.com

or call 234-2264.



**MURRAY CASE SELLS
SWIM CENTER**