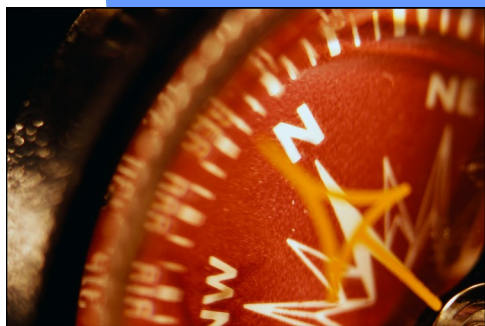


Partners in Planning

The Association of Central Oklahoma Governments (ACOG) works on mobility, public safety and quality of life issues that impact Central Oklahoma. As the metropolitan planning organization, we partner with the Federal Highway Administration (FHWA), the Federal Transit Administration (FTA), the Oklahoma Department of Transportation (ODOT), Central Oklahoma Transportation and Parking Authority (COTPA) and Cleveland Area Rapid Transit (CART). All transportation policy decisions are made by local elected officials serving on transportation committees.



Encompass 2035 is the long-range transportation plan for the Central Oklahoma region. Please contact ACOG if you need information about the planning process or have other questions.

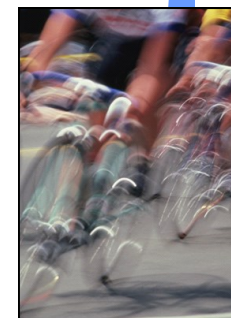
www.acogok.org/2035



ACOG — Association of Central Oklahoma Governments

21 E. Main Street, Suite 100
Oklahoma City, OK 73104-2405
Voice: 405-234-2264
Fax: 405-234-2200
Email: acog@acogok.org

This publication, printed in Central Oklahoma and developed by ACOG, is authorized by the Association of Central Oklahoma Governments Board of Directors, and financed through funding from the Federal Highway Administration and Oklahoma Department of Transportation. One hundred copies were prepared at a cost of \$24.00. Copies have been deposited with the Publications Clearinghouse of the Oklahoma Department of Libraries.



Encompass 2035

Planning for the transportation future of the region encompasses many considerations. Where will people live? Where will they work and go to school? How will they get there? The answers to these questions are found in data analysis and through information gathered from the citizens of Central Oklahoma.

Together, these projections help make up a vision of the transportation future, known formally as the Oklahoma City Area Regional Transportation Study (OCARTS) Plan. This plan utilizes a base year of 2005 and a forecast year of 2035, and a constrained budget that will showcase our realistic potential.

A compass helps determine direction, and as we develop the plan, we will engage with the citizens of Central Oklahoma to find out where the road will take them.

Planning for the Future

Our ultimate partner in planning is the transportation user in Central Oklahoma. If you live in the Oklahoma City Metropolitan Area, you use the regional transportation system every time you leave your home. Whether you're walking to the corner store, biking to school, taking a bus to work, or driving to the airport to catch a flight, you are one of the many travelers in the Oklahoma City region each day.

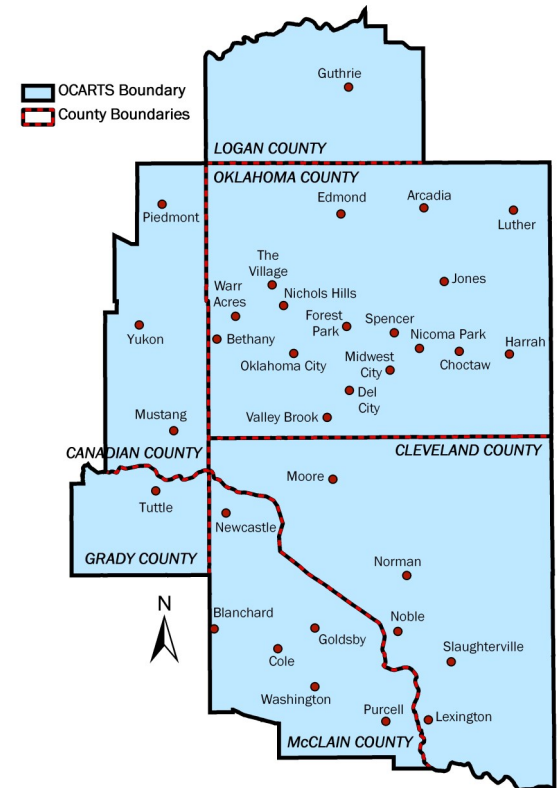


Establishing a Vision

Goals for the Encompass 2035 plan are based largely on citizen feedback, obtained from public engagement activities. There are many opportunities to be involved with the transportation planning process.

- Complete online (Internet) surveys to provide your views on transportation issues.
- Participate in our consensus building planning exercise, called "Red Dirt Monopoly." The game showcases the challenges of the planning process and allows citizens to express their transportation needs.
- Attend public meetings hosted throughout the region to learn about the planning process and the Encompass 2035 plan.
- Add your name to the list of citizens and organizations to receive information about the transportation planning process and notice of future engagement opportunities.
- Review and comment on the draft summary of the plan when it becomes available.

Your contributions to the planning process will help us develop a long-range plan that is comprehensive and responsible, and adaptable to the needs of the current traveler and those of tomorrow.



Encompass: Verb.
1. to form a circle about
2. to enclose
3. to include comprehensively