



REGIONAL TRANSIT AUTHORITY
RTA★TaskForce

John G. Johnson, Executive Director
Association of Central Oklahoma Governments

February 17, 2016 | RECAP on the RTD Boundary Scenarios

RECAP

REGIONAL TRANSIT DIALOGUE



PROCESS



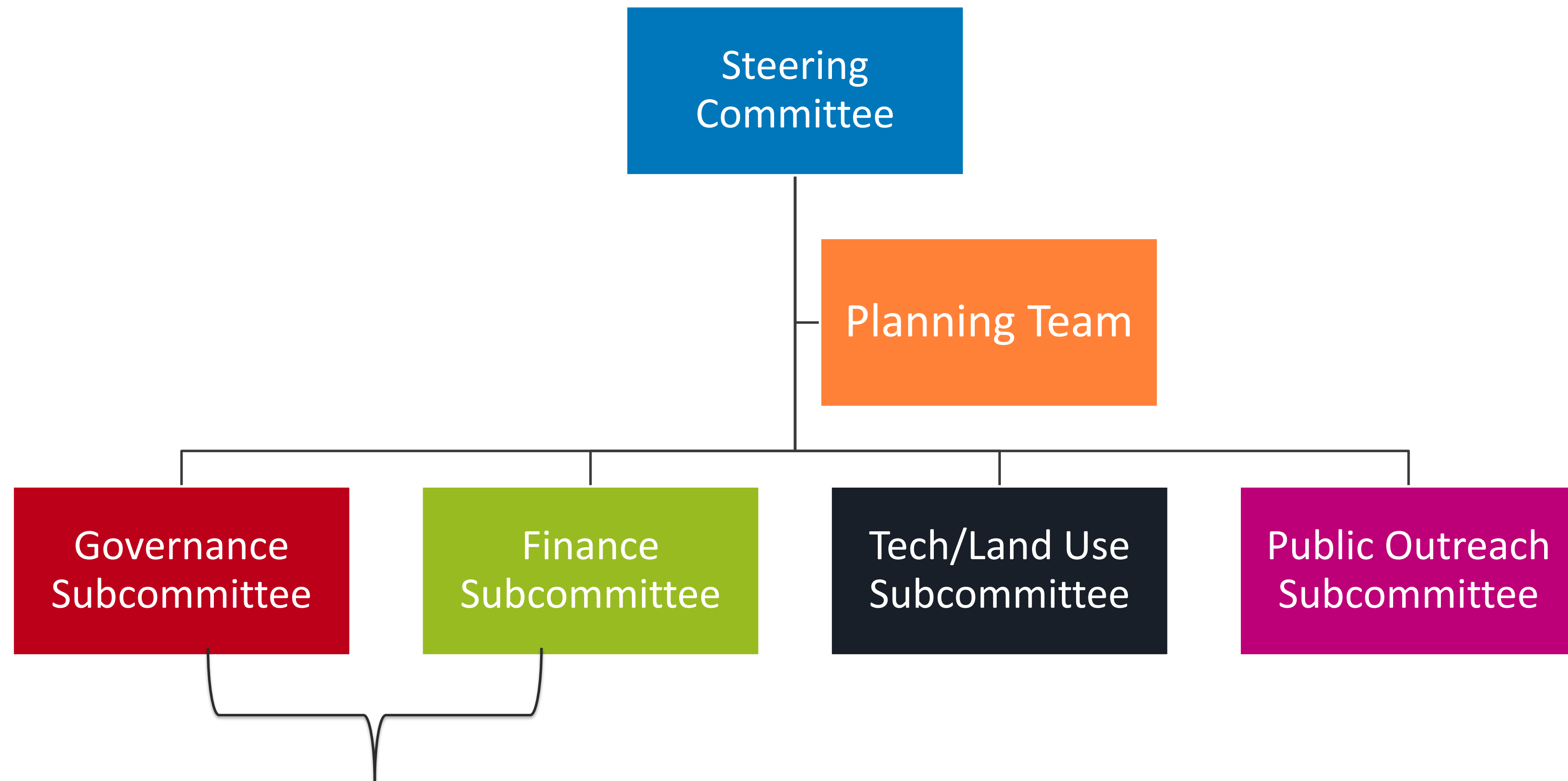
12-MONTH
TIMEFRAME
April 2009-March 2010



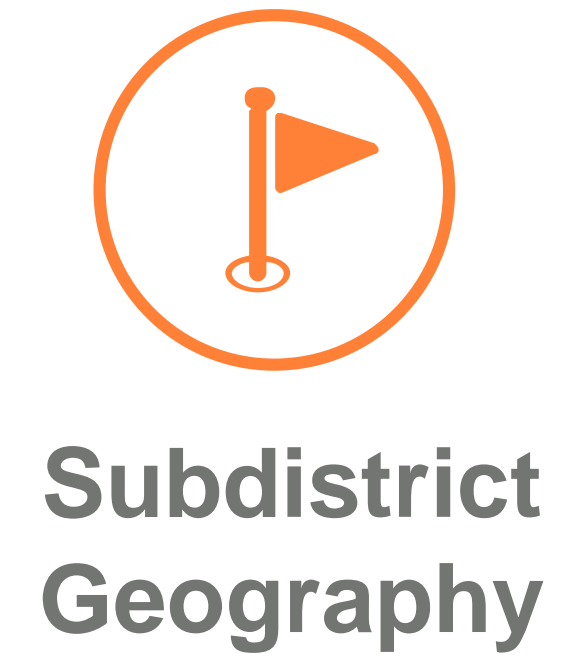
Committee
Structure
“localized” from
Kansas City’s
Smart Moves
initiative.

COMMITTEE STRUCTURE

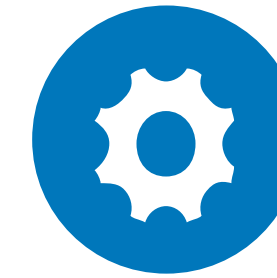
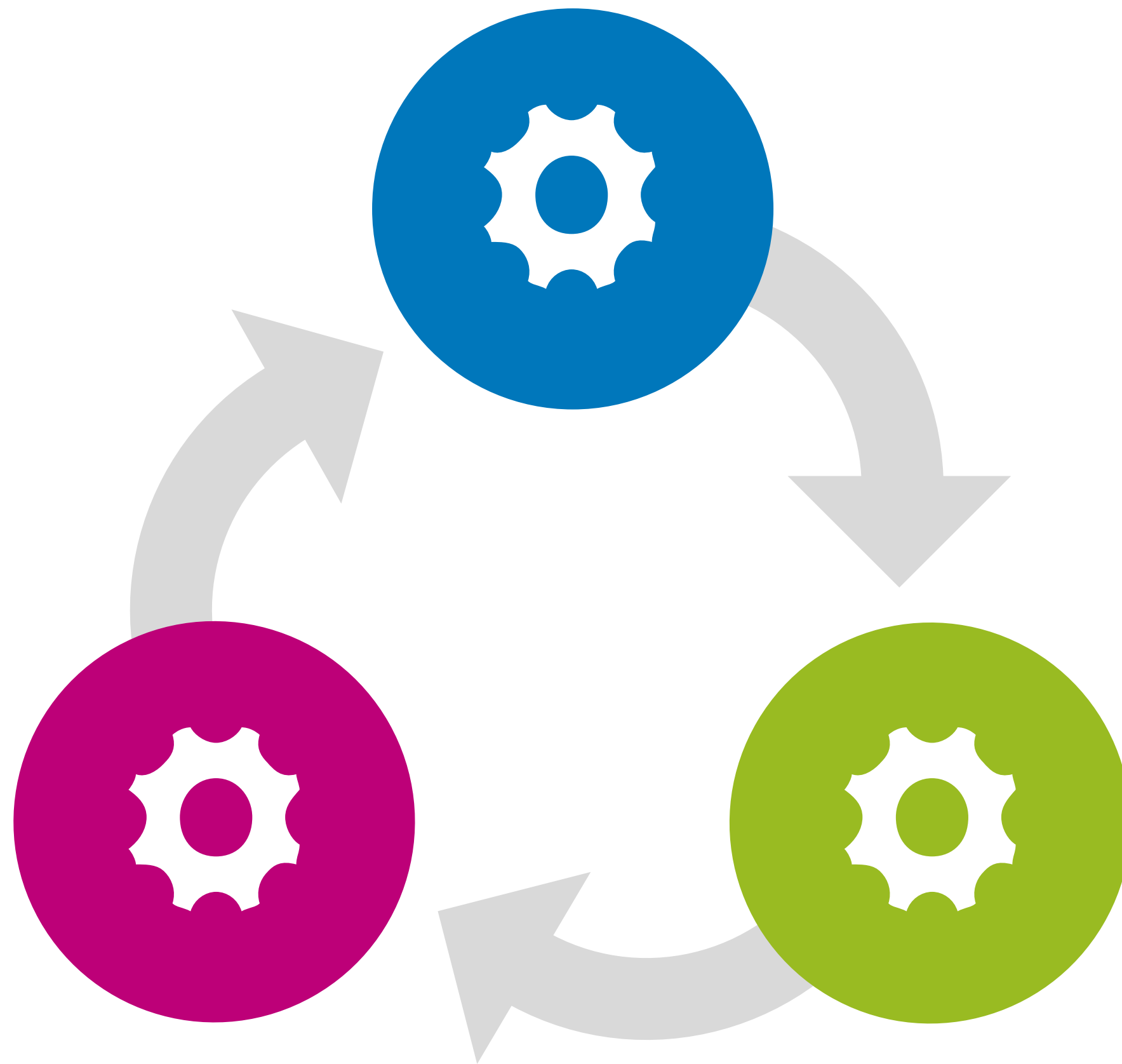
REGIONAL TRANSIT DIALOGUE



GOVERNANCE & FINANCE SUBCOMMITTEE FOCUS



RTA BOUNDARY CONSIDERATIONS



TRANSIT SERVICE

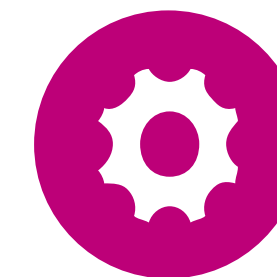
Geography should include areas that would be most likely to receive transit service.

Based on full build-out of 2005 Fixed Guideway Study.



TAX BASE

Geography should be large enough to generate needed tax base.

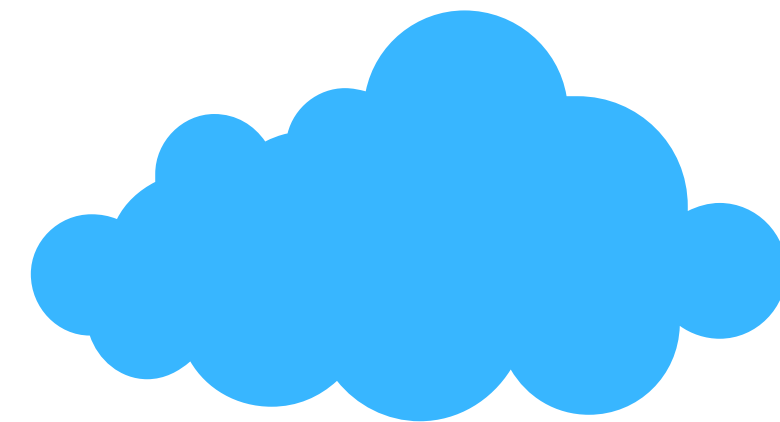


TRANSIT BENEFITS

Geography should not include areas that would be unlikely to receive transit benefits.

COUNTY MODEL

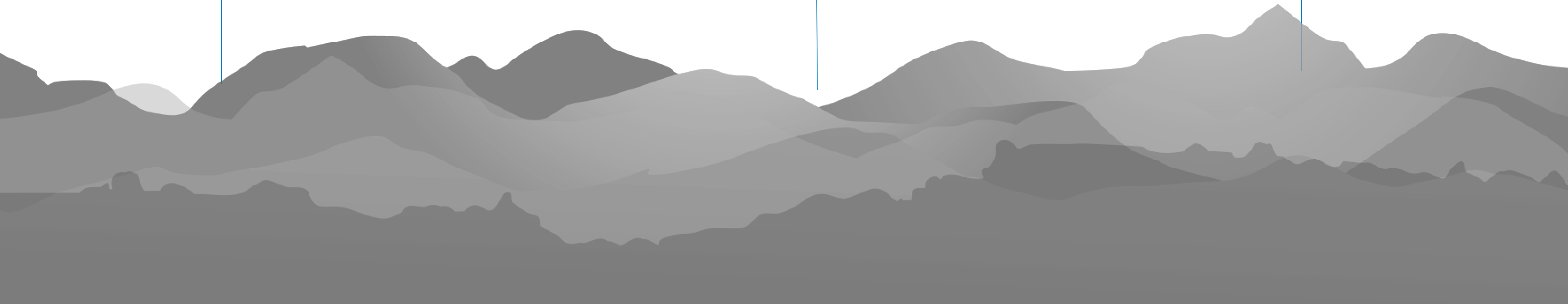
RTA Boundary
Would Follow
County Lines



Initial Vote To
Create the RTA
Would Take
Place On
County Level



Tax Would Be
Collected at the
County Level

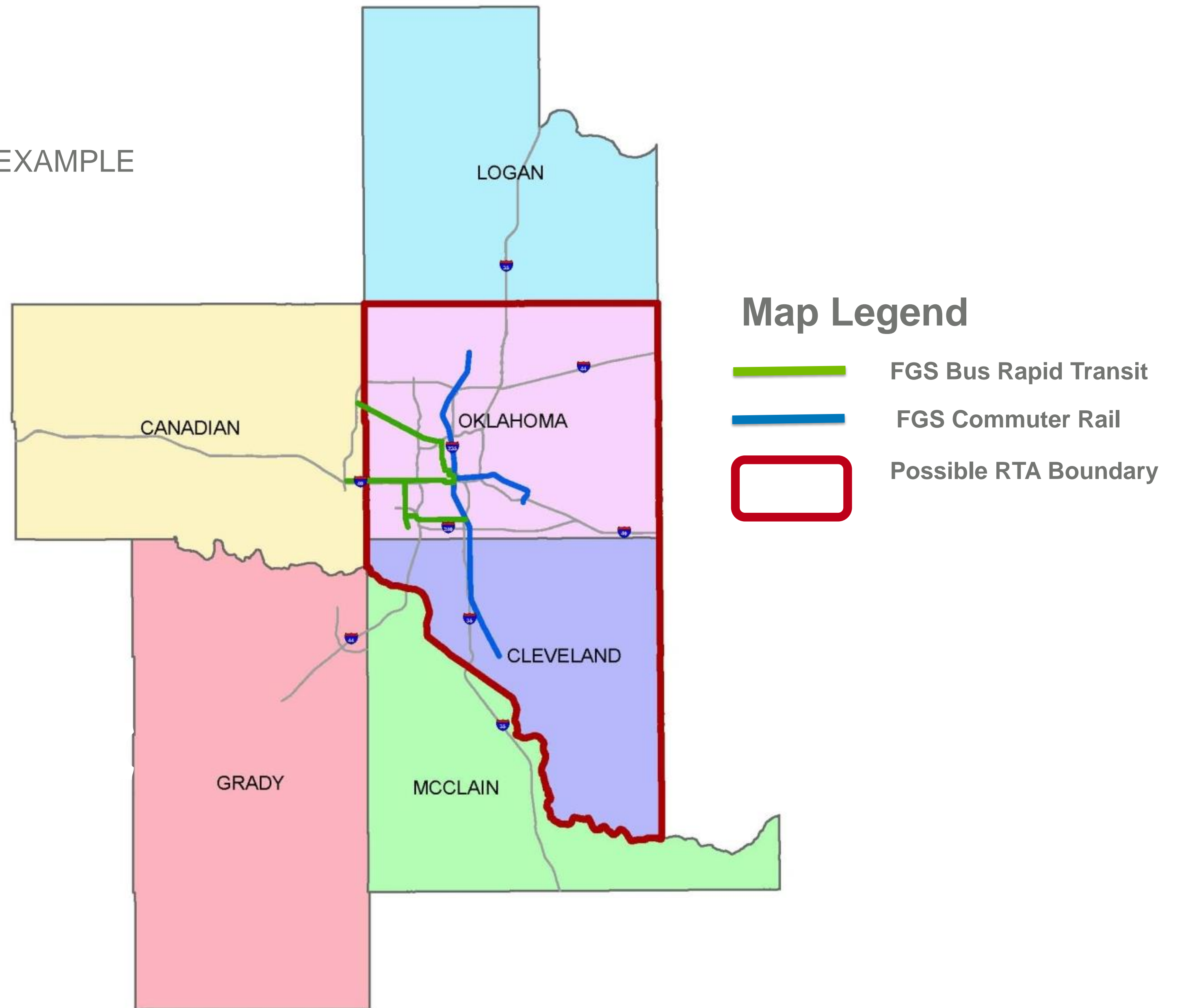


COUNTY MODEL

OKLAHOMA and CLEVELAND COUNTIES EXAMPLE

Boundary Population

938,000 (2007)



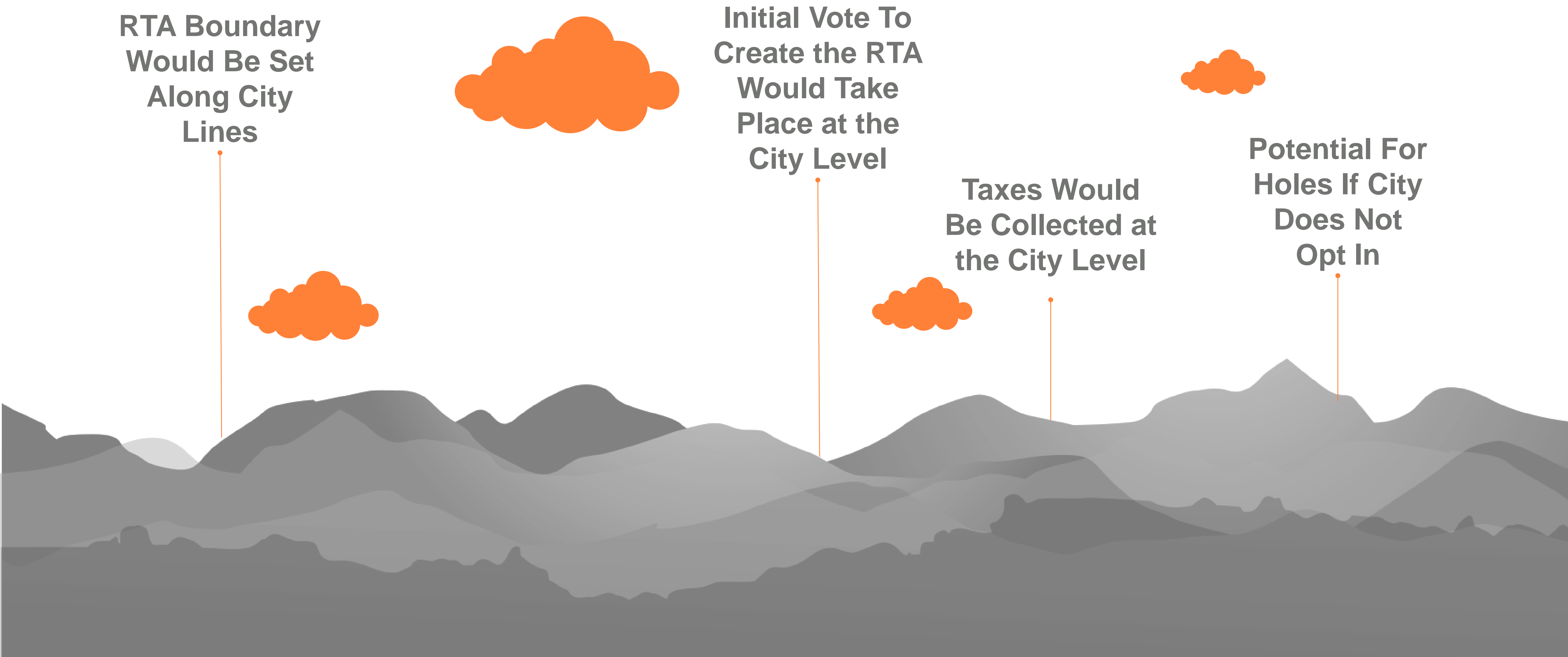
CITY MODEL

RTA Boundary
Would Be Set
Along City
Lines

Initial Vote To
Create the RTA
Would Take
Place at the
City Level

Taxes Would
Be Collected at
the City Level

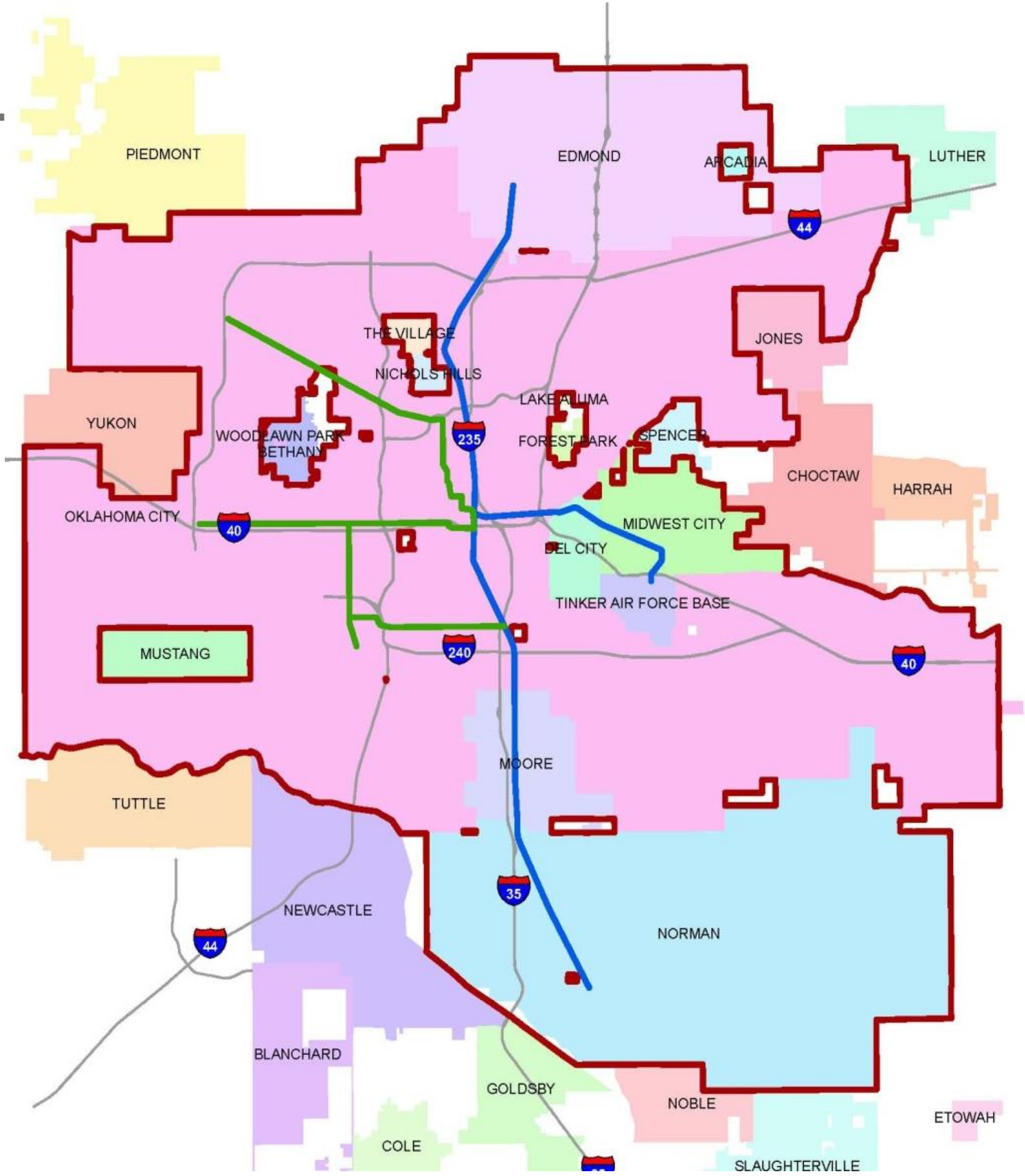
Potential For
Holes If City
Does Not
Opt In



CITY MODEL

Boundary Population

861,000 (2007)



Map Legend

- FGS Bus Rapid Transit
- FGS Commuter Rail
- Possible RTA Boundary

DISTRICT MODEL

RTA Boundary
would not have
to follow Pre-
Existing Legal
Boundaries



HB 2480

District would
be a unique
geography
much like
a School
District



District would
be created by
Cities that
adopt an MOA



If the majority
of the District
votes YES, then
funding for the
RTA is
established

HB 2480

Amended Previous Legislation | 68 O.S. 2011, Sec. 1370.7

RTD Member
Rep. Charlie Joyner



**Allowed for
Creation of
Regional Districts**

Signed by
Governor Fallin
May 22, 2014



**Any combination
of any portions of
cities, towns or
counties**



**Staffing and
Operating added
to definition of
“operations”**

OKC
Chamber
Lobbied and
Advocated

Critical
Critical Step for
Forming a Regional
Transit Authority
(RTA) District



**Governed by
Board of Directors
appointed by
creating entities**



RTA ★ TASK FORCE
February 2016

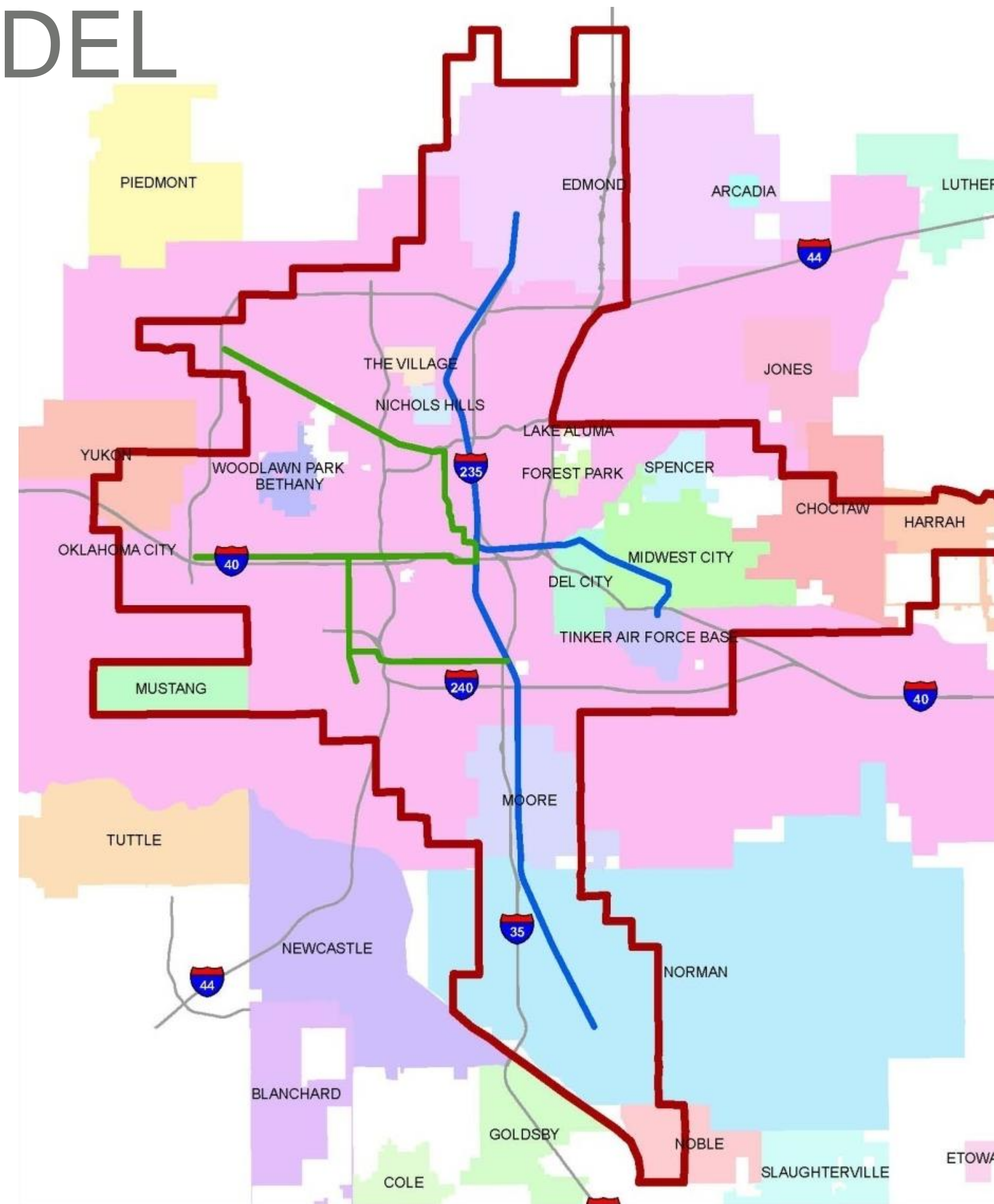
DISTRICT MODEL

BASED ON URBANIZED AREA

Boundary Population

845,000 (2007)

The RTA Boundary would be similar to the combined Oklahoma City and Norman Urbanized Areas designated by the US Census Bureau



Map Legend




- FGS Bus Rapid Transit
- FGS Commuter Rail
- Possible RTA Boundary

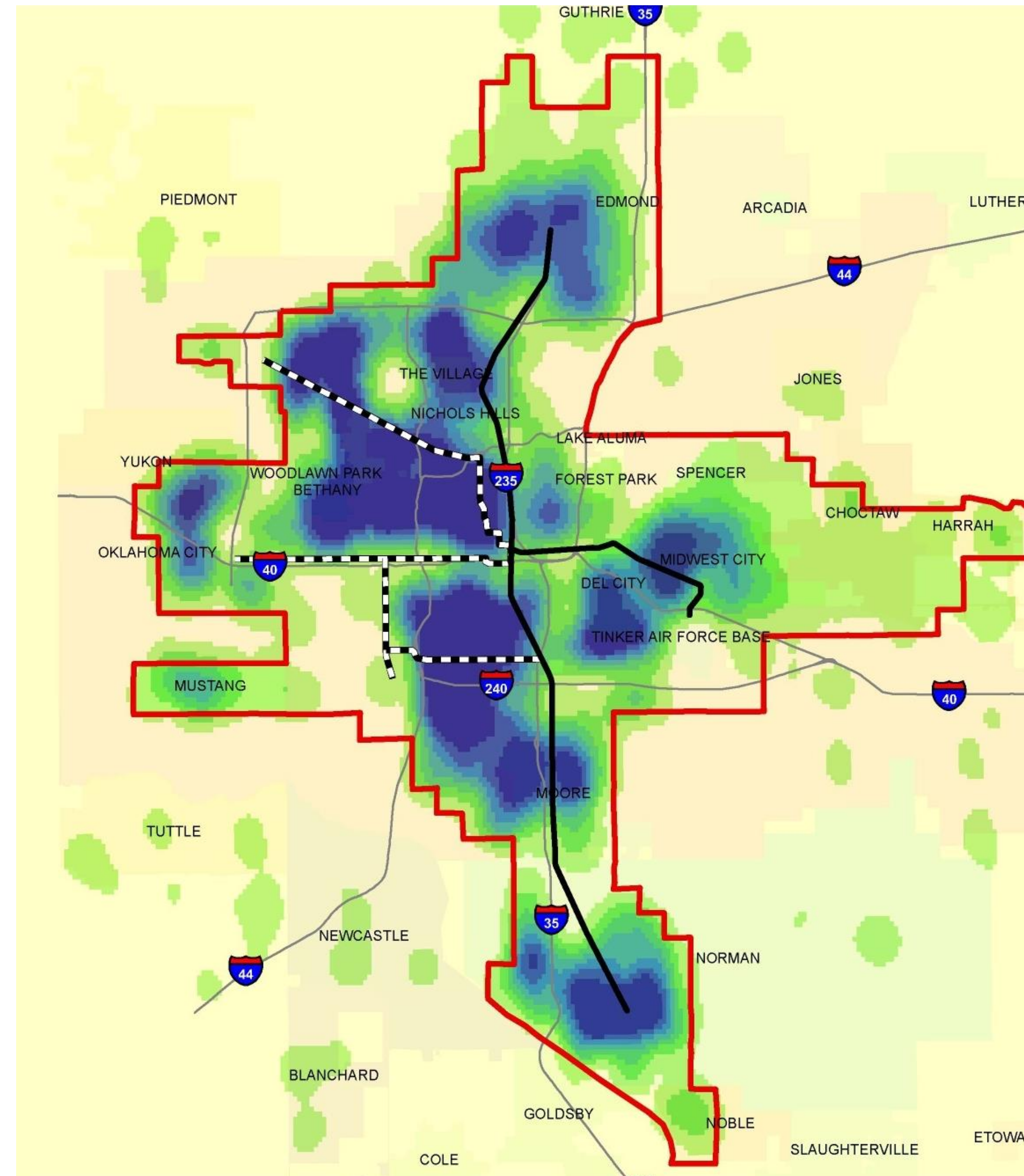
DISTRICT MODEL

POPULATION DENSITY

Darker Areas Represent Higher Population

Map Legend

-  FGS Commuter Rail
-  FGS Bus Rapid Transit
-  Possible RTA Boundary






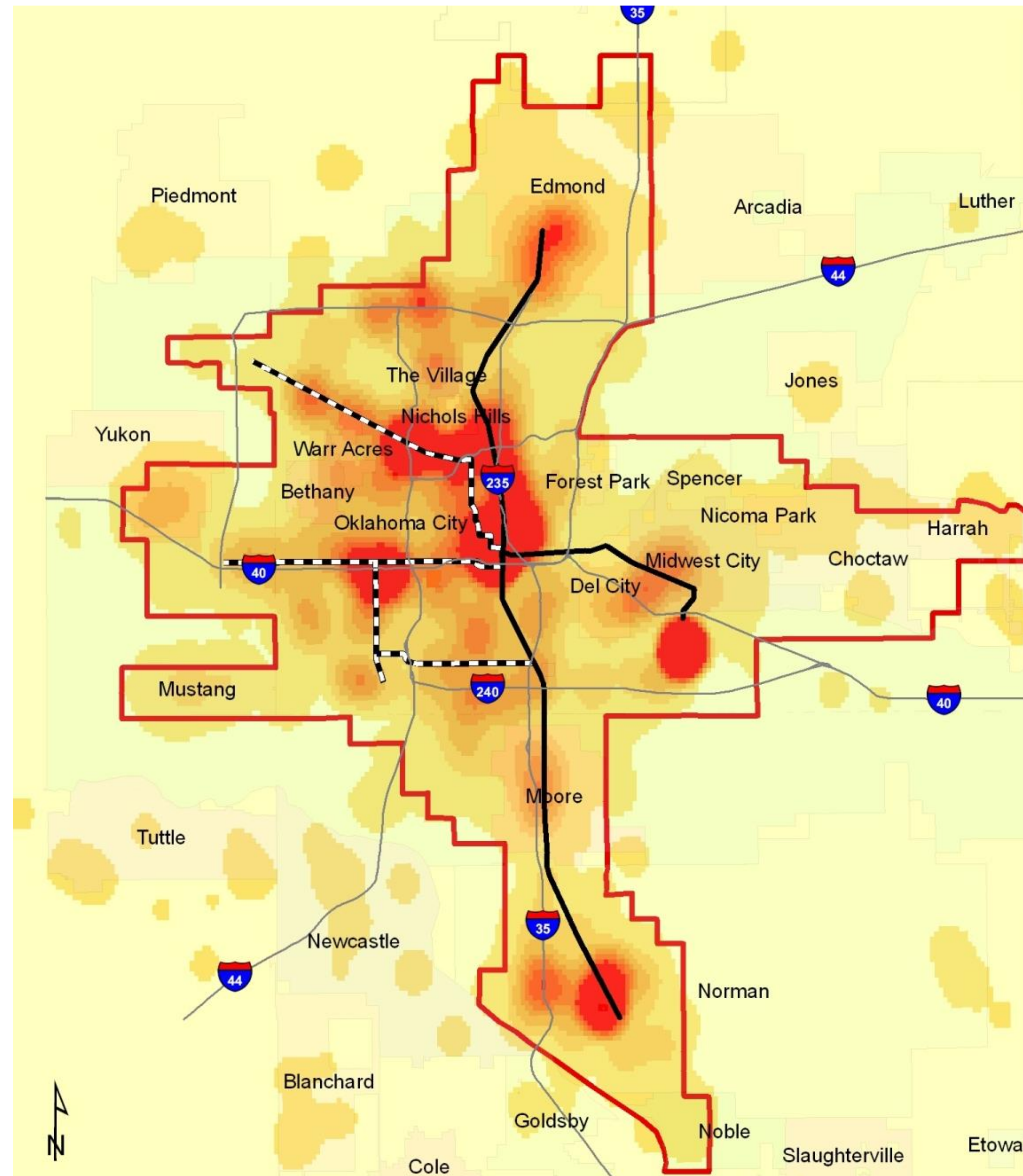
DISTRICT MODEL

EMPLOYMENT DENSITY

Darker Areas Represent
Higher Employment

Map Legend

-  FGS Commuter Rail
-  FGS Bus Rapid Transit
-  Possible RTA Boundary



THE UZA AS A BASE

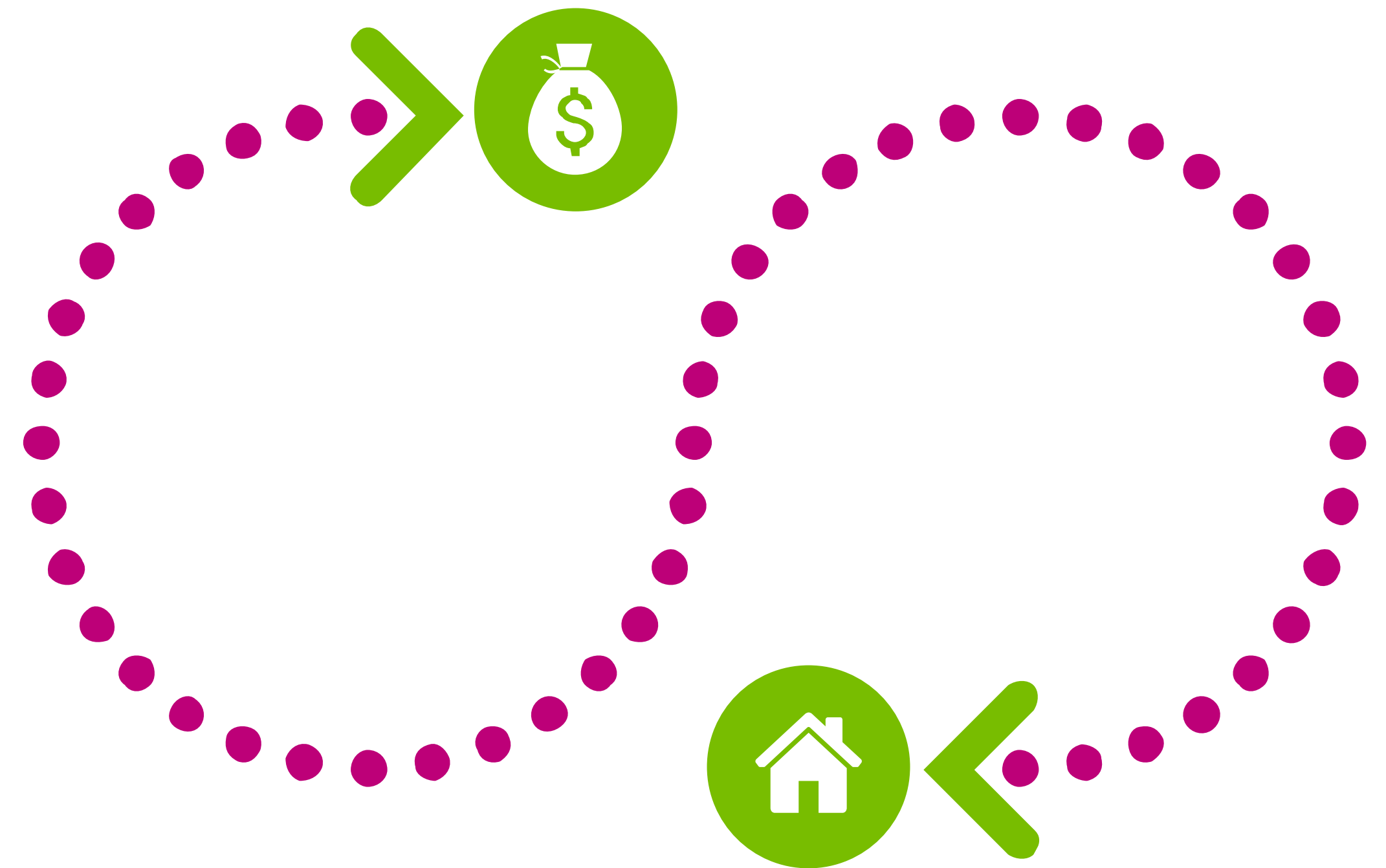
TAX COLLECTION

Finance/Governance Subcommittee sought help from the Oklahoma Tax Commission to see what was feasible for tax collection purposes.

BOUNDARIES

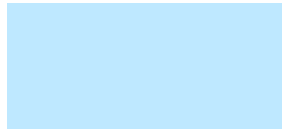
Easiest if boundary is based on a pre-existing political boundary:

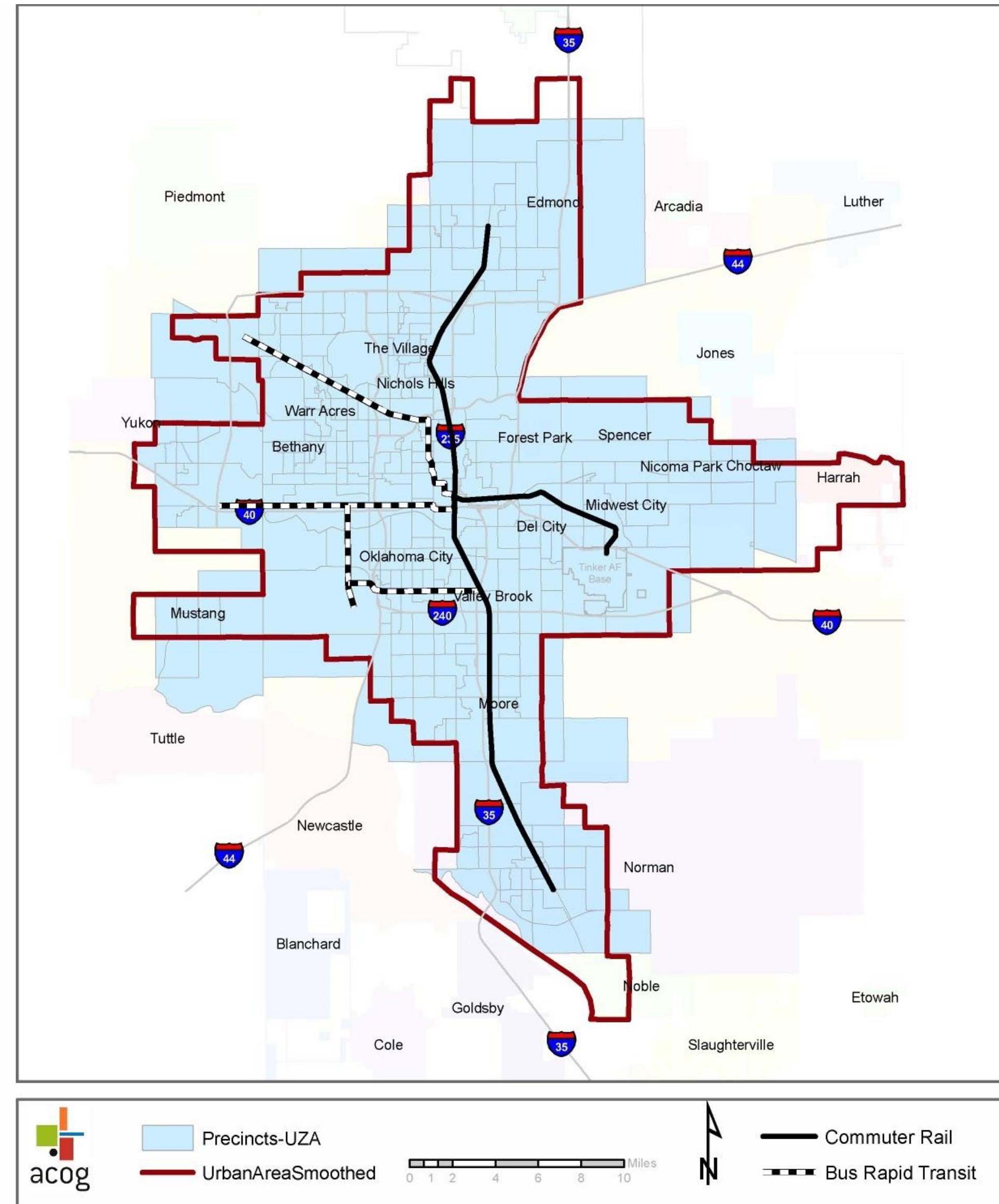
- State/House Senate Districts
- School Districts
- Precincts



DISTRICT MODEL

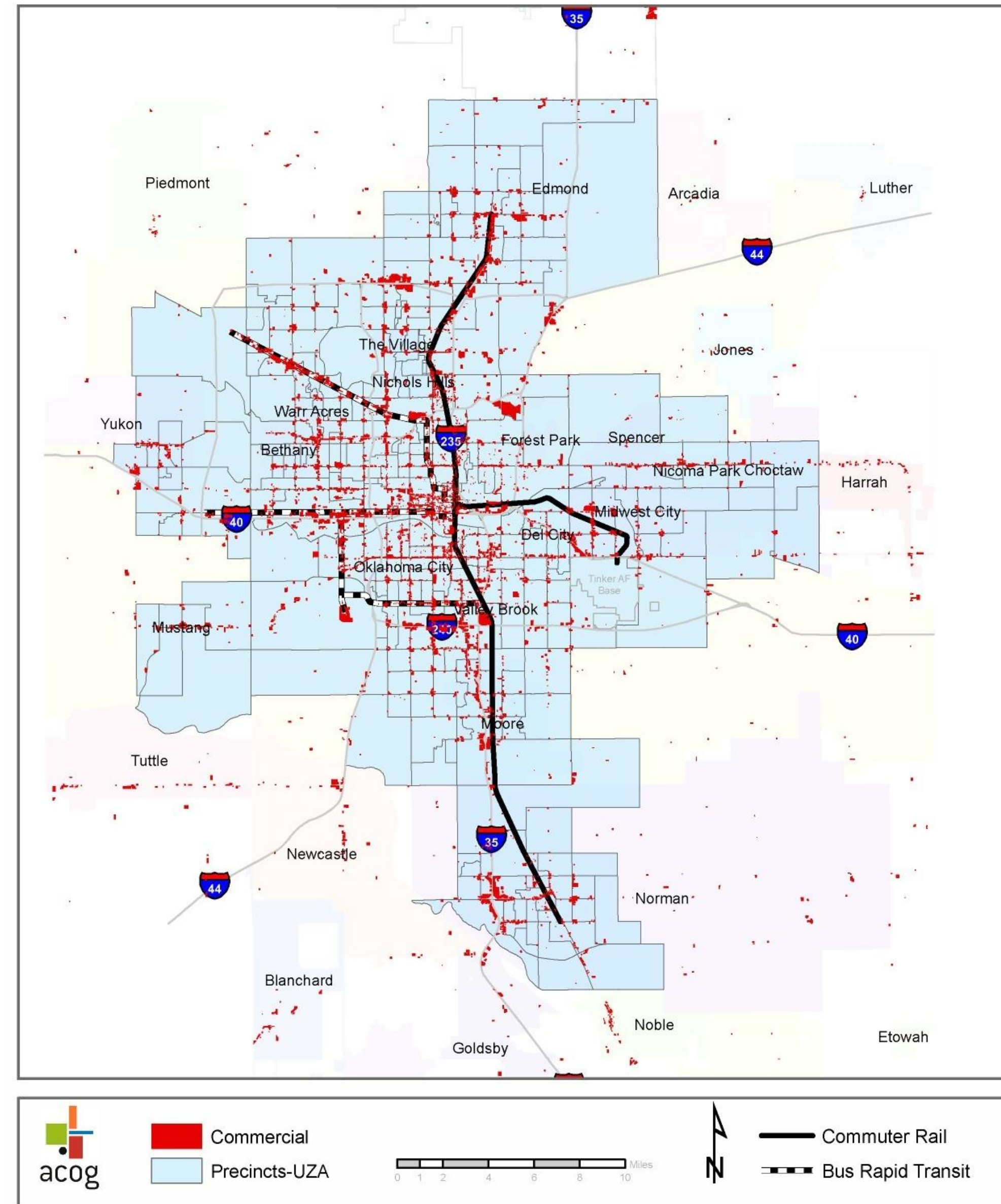
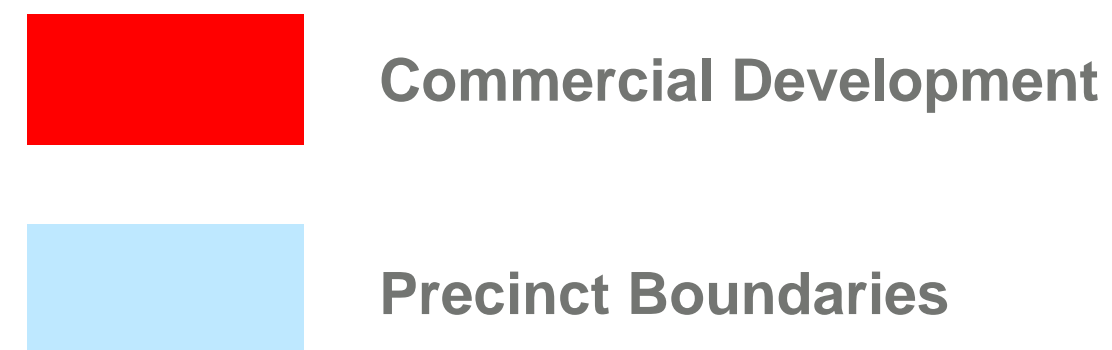
UZA Boundary and Precincts

-  Urbanized Area Boundary
-  Precinct Boundaries



DISTRICT MODEL

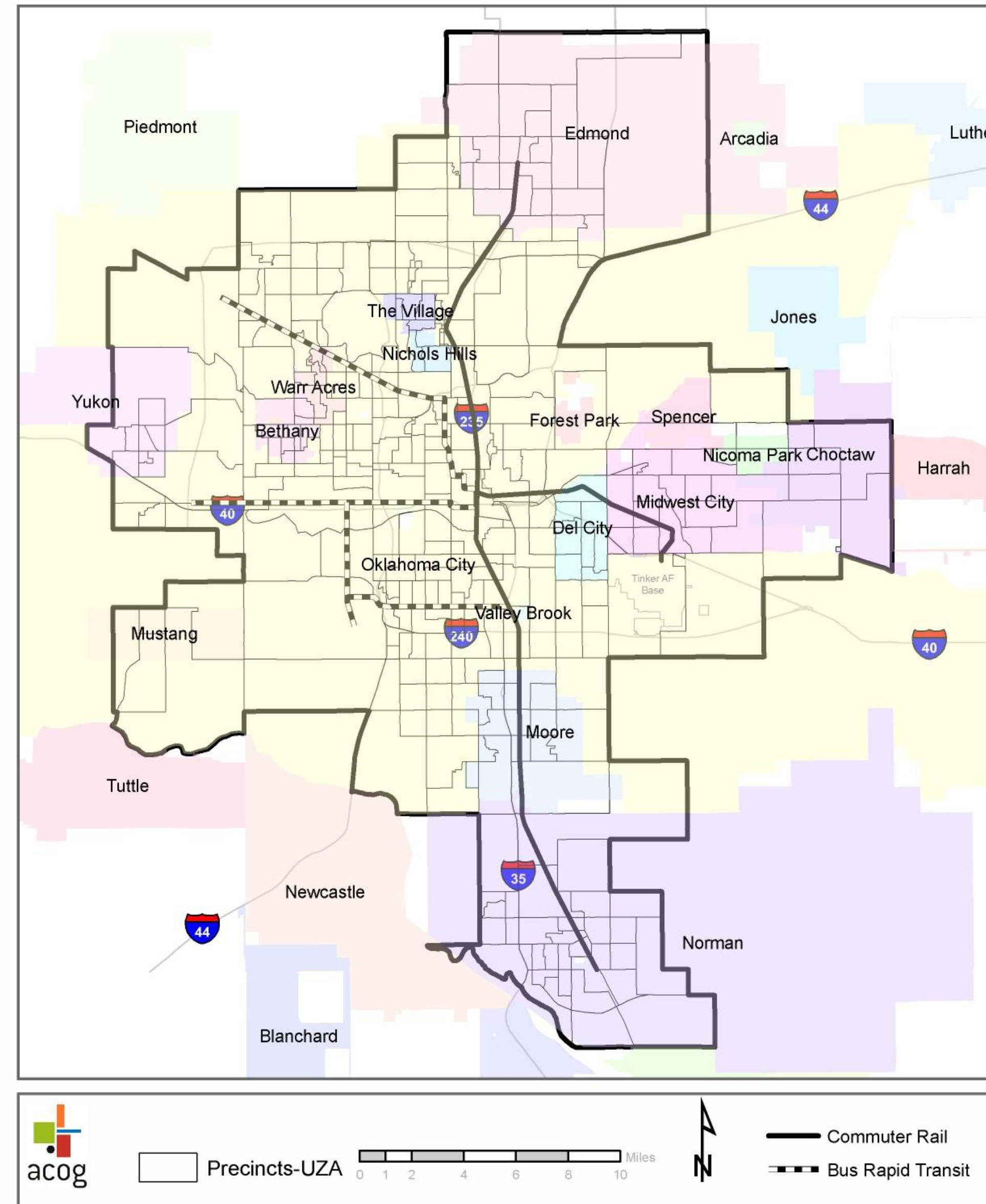
Precincts and Current Commercial Land Use



DISTRICT MODEL

Precincts and City Limits

Revised Possible RTA Boundary
Based on Precinct Boundaries



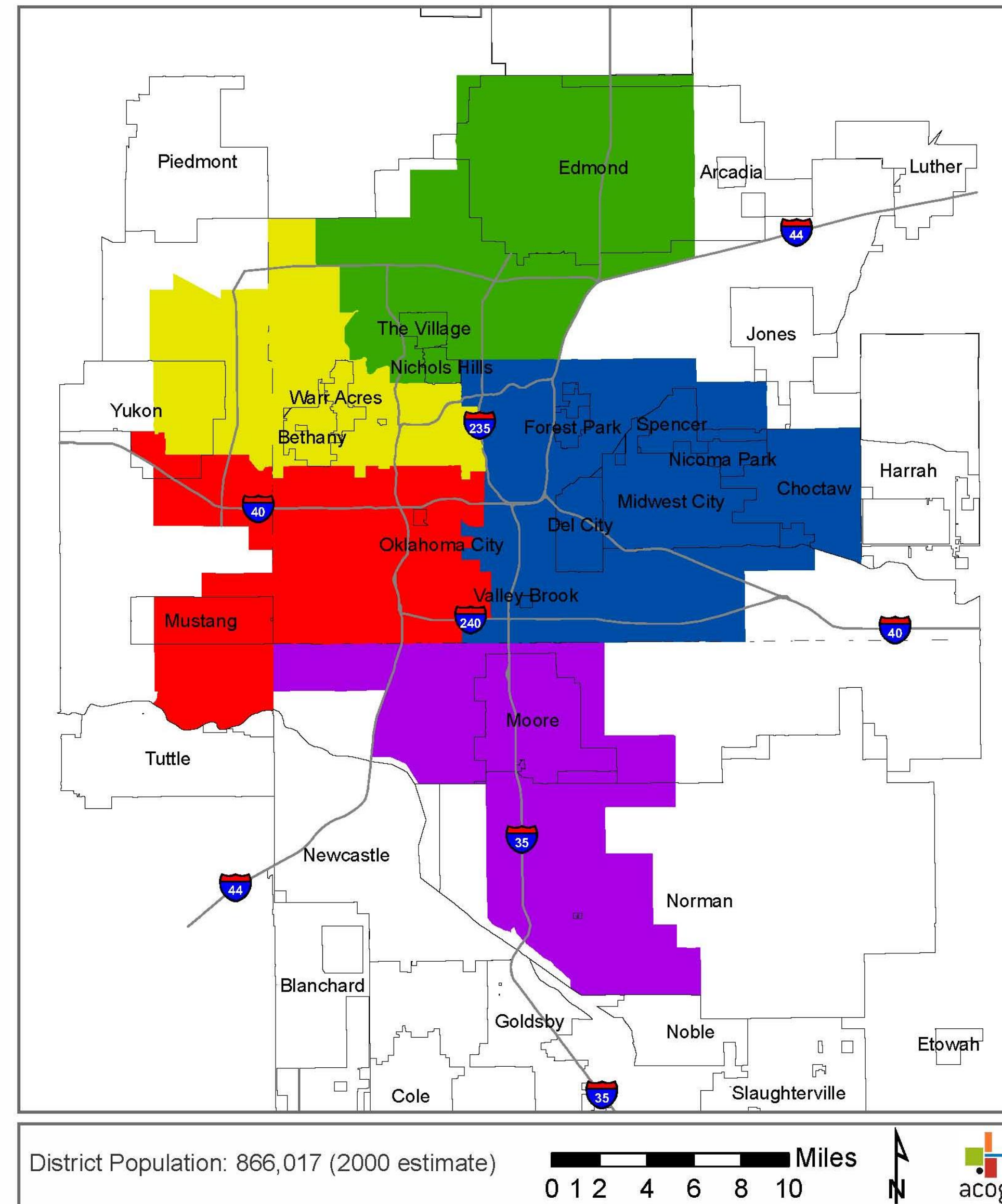
SUBDISTRICT CONSIDERATIONS



DISTRICT MODEL

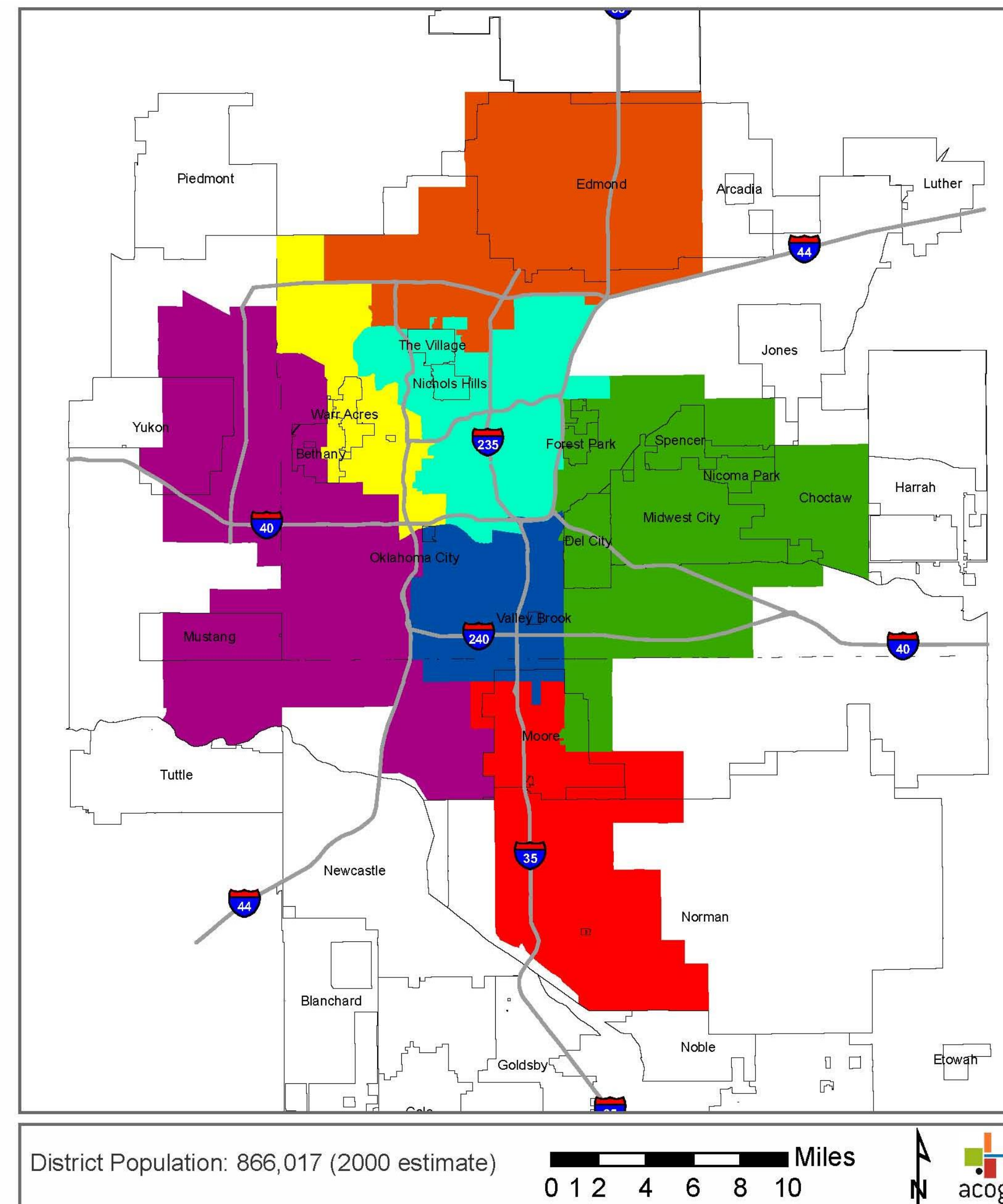
Five Subdistricts Scenario

Approximately 173,200 Population per Subdistrict
(2000 Population)



15 SEPTEMBER 2006

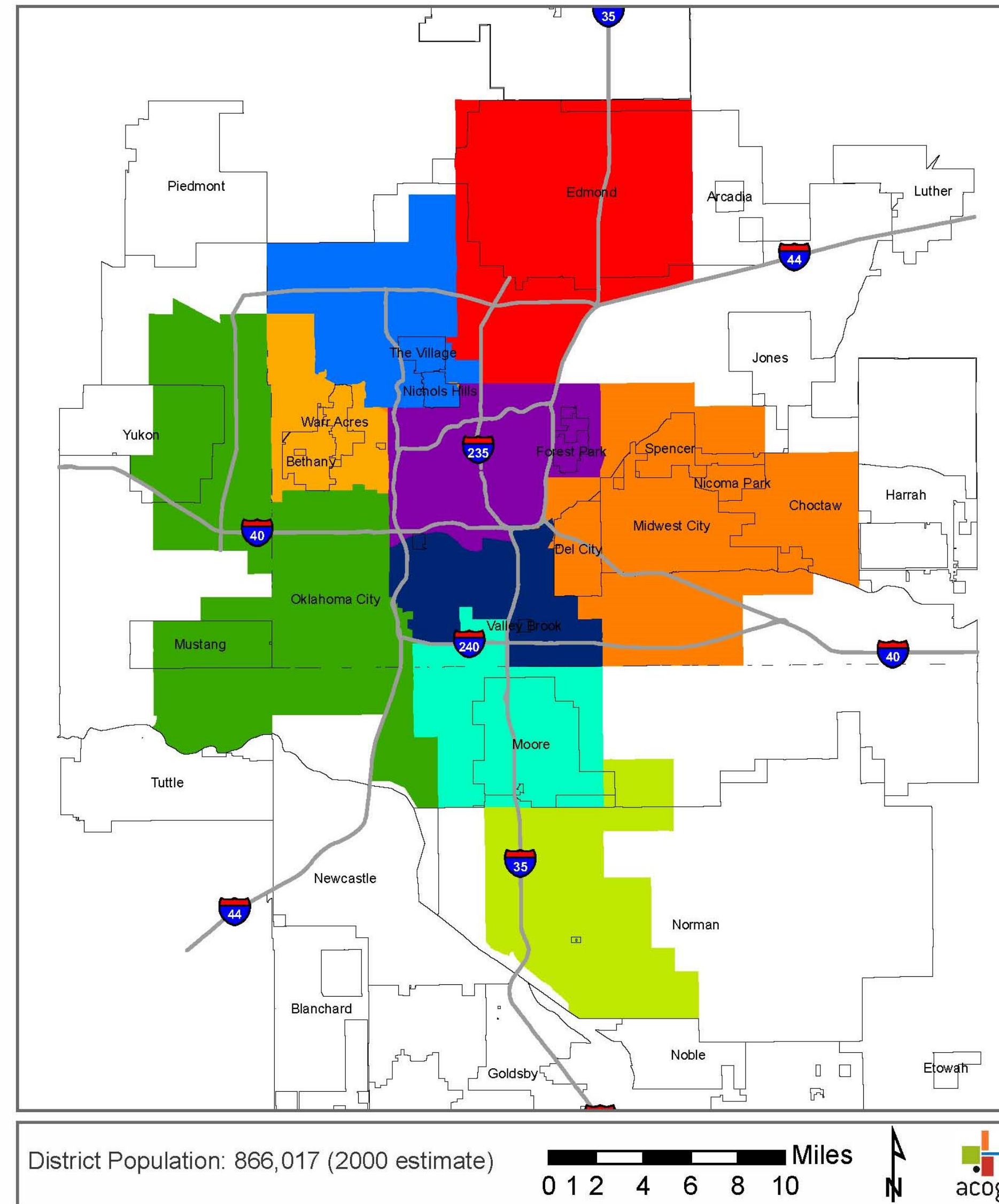
**Approximately 123,700 Population per Subdistrict
(2000 Population)**



DISTRICT MODEL

Nine Subdistricts Scenario

Approximately 96,000 Population per Subdistrict
(2000 Population)



QUESTIONS?

ASSOCIATION of CENTRAL OKLAHOMA GOVERNMENTS
acogok.org | jjohnson@acogok.org | 405.234.2264



RTA ★ TASK FORCE
February 2016