



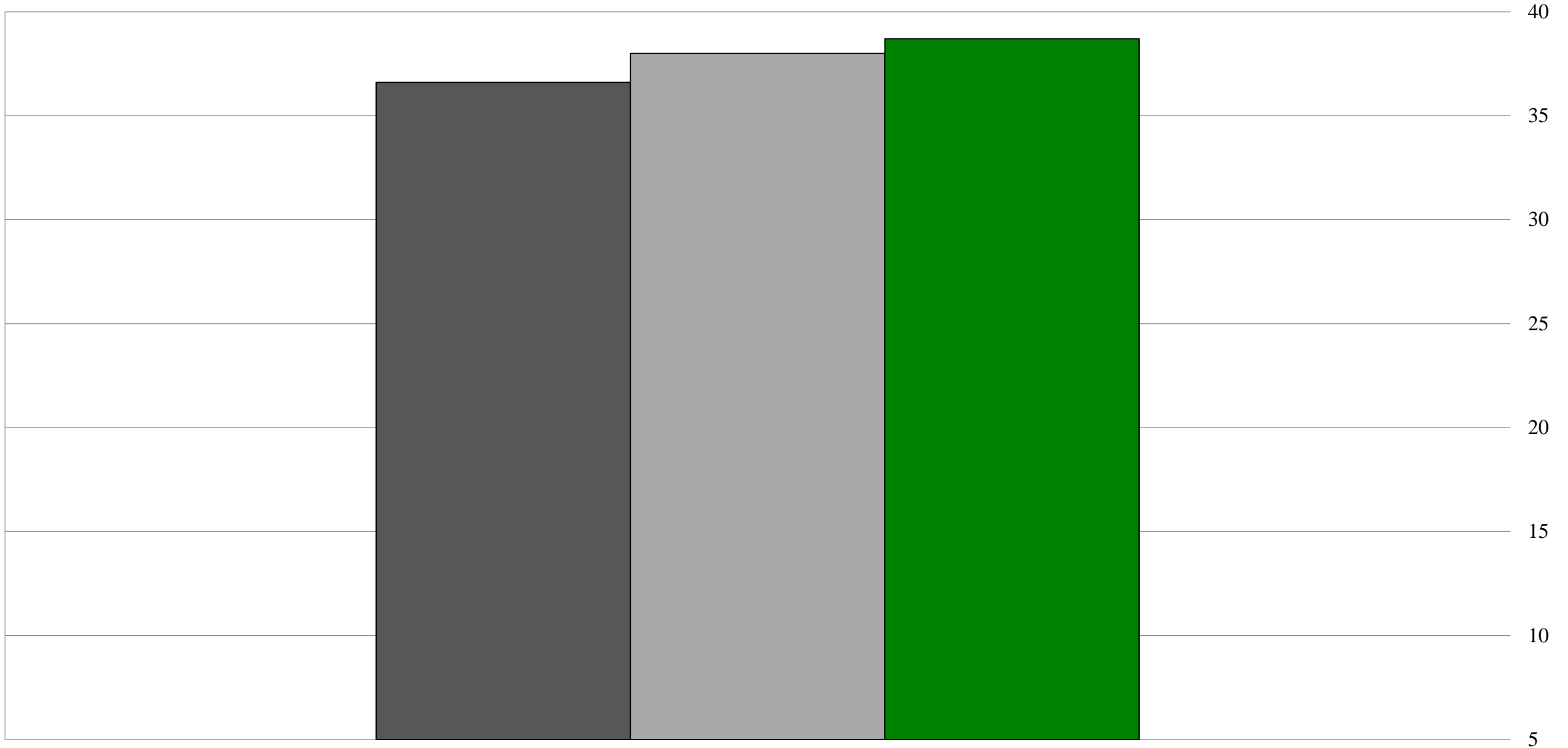
OFFICE OF SUSTAINABILITY

ACOG – Areawide Planning Technical Advisory Committee

Thursday, January 11, 2018

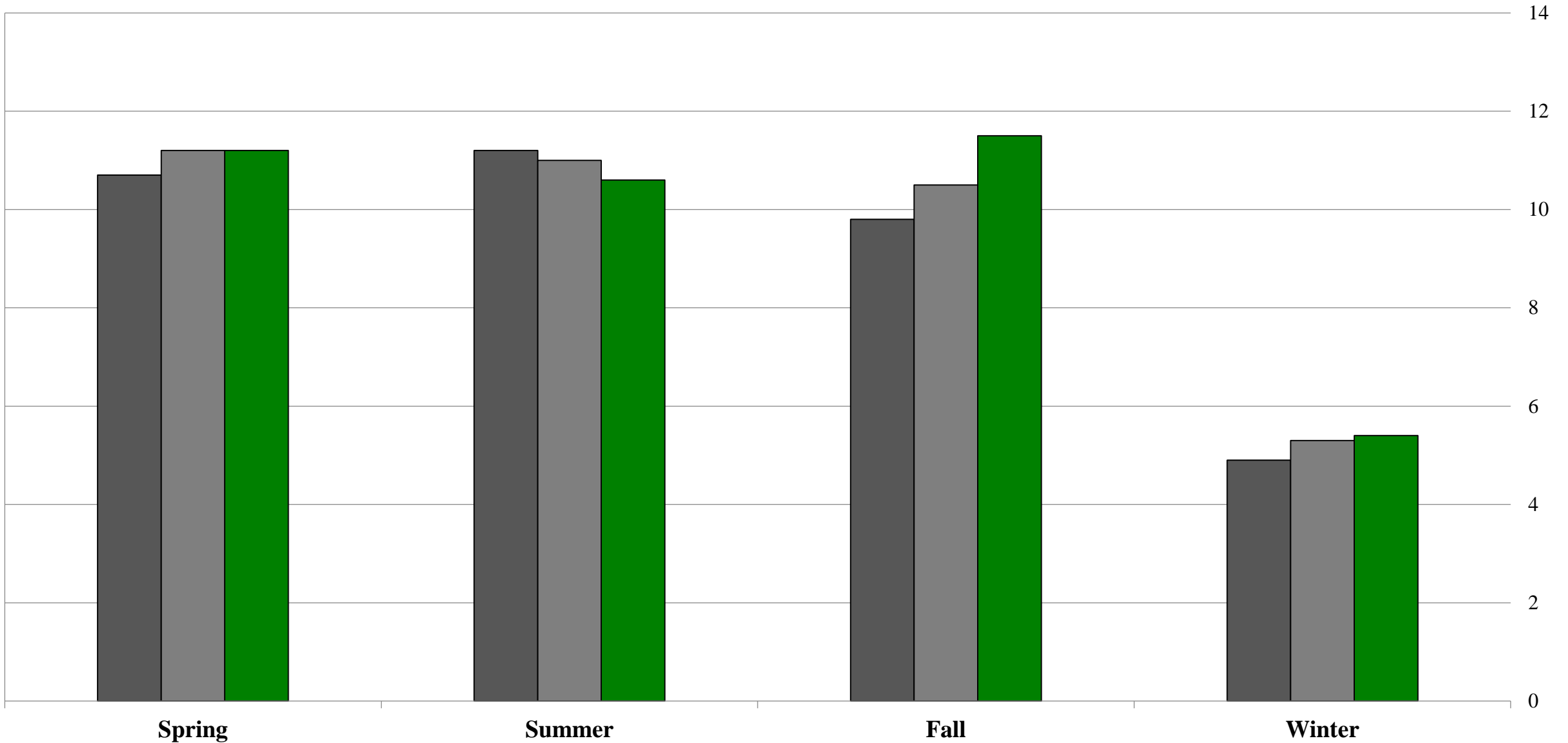
Projected OKC Average Annual Precipitation

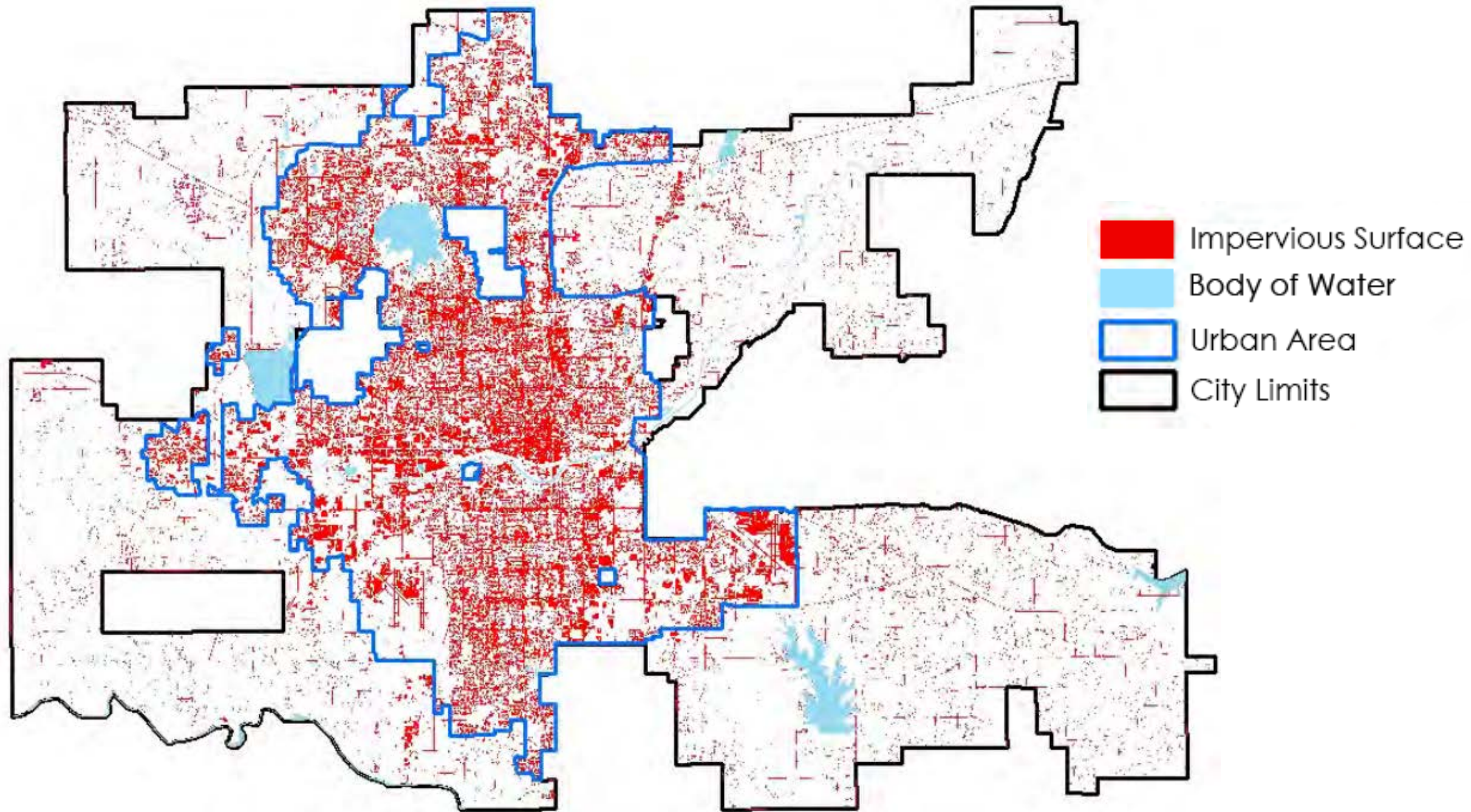
■ 1981 - 2010 ■ 2021 - 2050 ■ 2051 - 2080



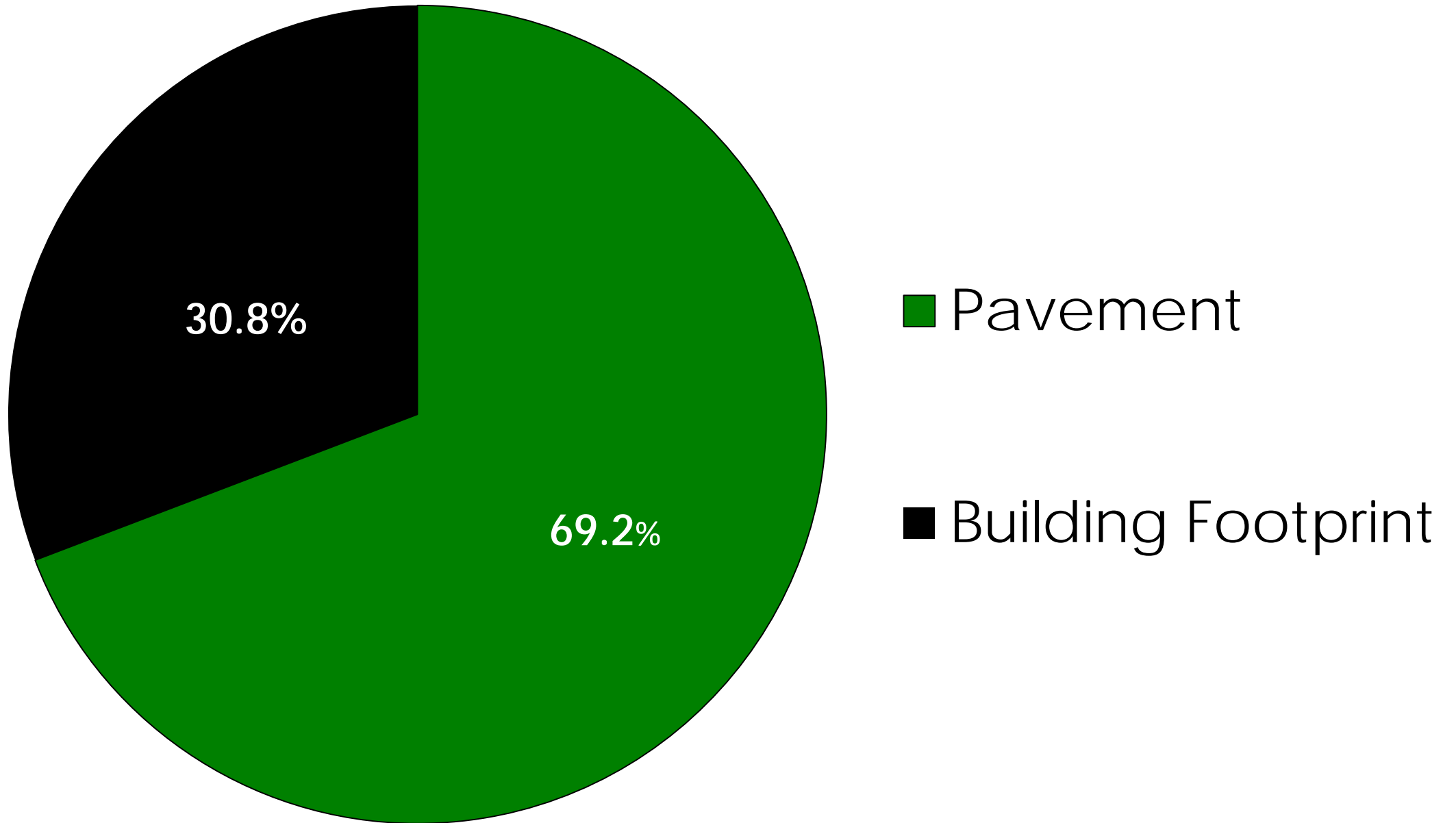
Projected OKC Seasonal Average Precipitation

■ 1981 - 2010 ■ 2021 - 2050 ■ 2051 - 2080





Oklahoma City Impervious Surface



4%



 Central Park

 Edgemere Park

 Paseo

 Jefferson Park

The logo for the Environmental Protection Agency (EPA), featuring a stylized flower with three leaves and the letters "EPA" in a bold, sans-serif font.The logo for Skeo, featuring a stylized, geometric diamond shape composed of many thin lines and the word "Skeo" in a bold, sans-serif font.

P E R K I N S

+ W I L L









THE
DASEO

Walker Ave

BEER ICE SAMIR GROCERIES BREAD MILK

ATM

25

THE
DASEO

bicycle



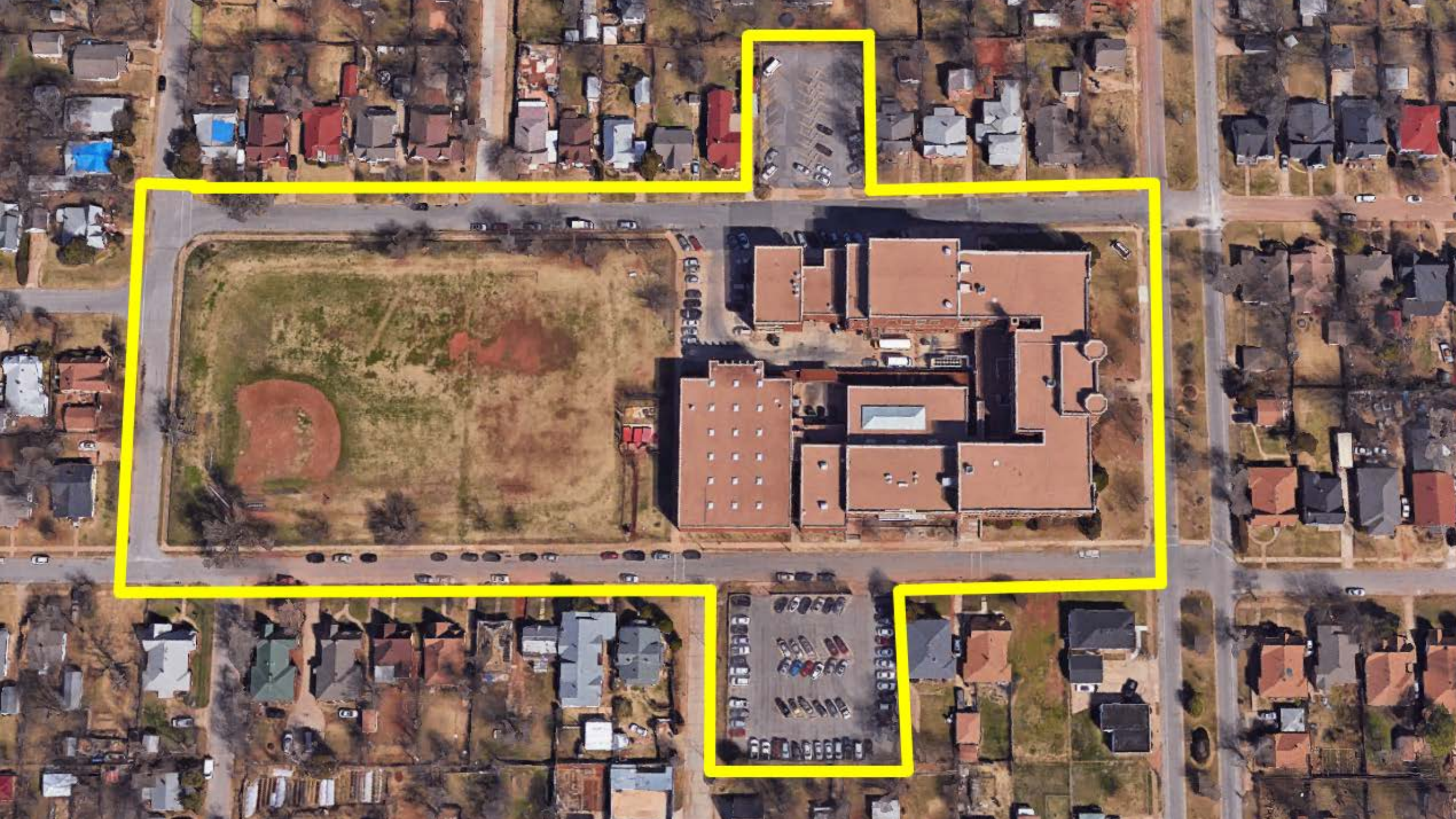








Image Landsat









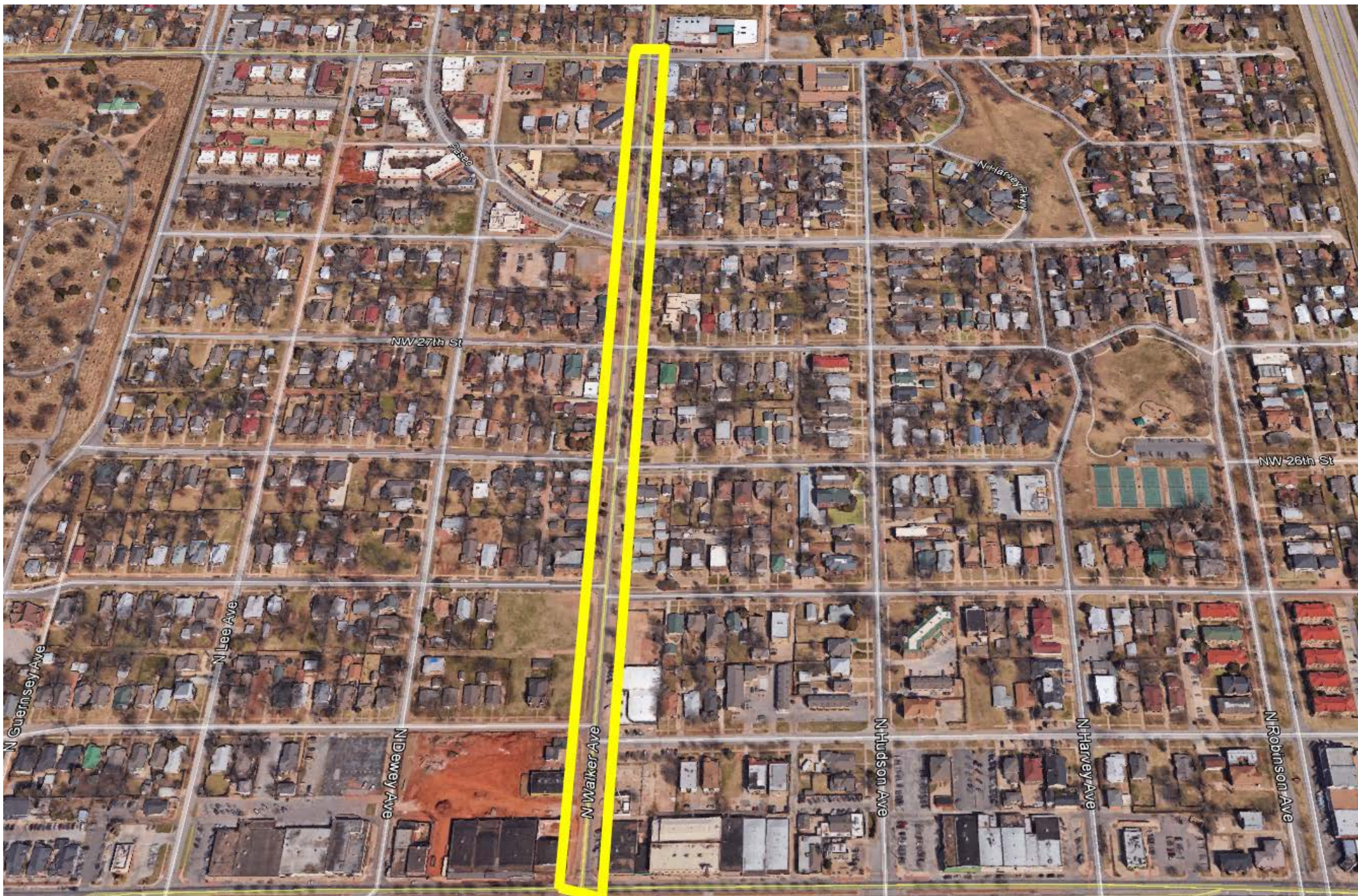
Shartel Ave





18th St
Shart...





NW 26th St

25





SURFACE TRANSPORTATION BLOCK GRANT PROGRAM PROCEDURES FOR THE OKLAHOMA CITY URBANIZED AREA FUNDS

October 27, 2016

Eligible Projects

STP-UZA funds may be used for the following categories of projects, as authorized by 23 USC 133(b):

- 6) Highway and transit safety infrastructure improvements and programs, installation of safety barriers and nets on bridges, hazard eliminations, projects to mitigate hazards caused by wildlife, and railway-highway² grade crossings.

² The term “highway” includes roads, streets and parkways, and also includes rights-of-way, bridges, railroad-highway crossings, tunnels, drainage structures, signs, guardrails, and protective structures in connection with highways, according to Chapter 1, Sec. 101, Title 23, USC.



City of Oklahoma City Planning Department Office of Sustainability

Ryan Baker
Associate Planner

sustainability@okc.gov