

WORKSHOP

STBG-UZA CALL FOR PROJECTS

Hayden Harrison

Program Coordinator

Transportation Planning Services

Lauren Wood

Associate Planner

Transportation Planning Services

SEPTEMBER 2020

acog

WORKSHOP OUTLINE

- Introduction and Background
- Relationship to TIP
- TIP Updates
- Federal Share
- Eligibility
- Scoring Criteria
- Application Process
- Submission Process
- Call for Projects Schedule
- Document Links

INTRODUCTION AND BACKGROUND

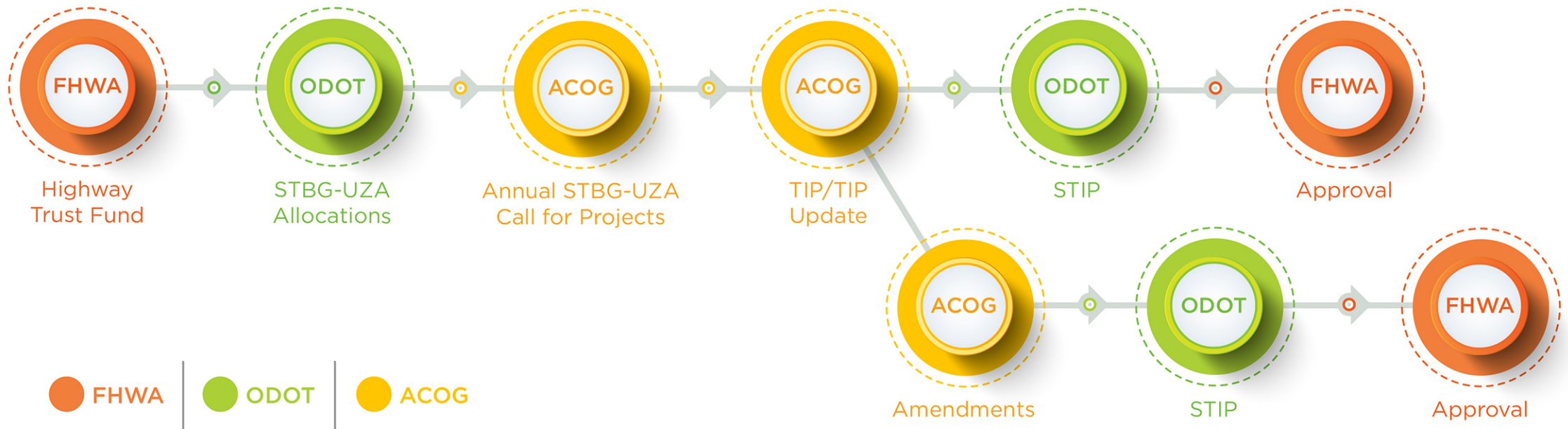
STBG-UZA FUNDS

- Surface Transportation Block Grant – Urbanized Area Program
 - Federally authorized formula funding allocated to the Oklahoma City Metropolitan region
 - Based on the population of the Oklahoma City and Norman UZAs
- STBG-UZA Program Procedures* document outlines program rules and regulations
 - Calls for evaluation criteria to score and prioritize projects for programming
 - Ensures that the region develops a fiscally constrained Transportation Improvement Program (TIP)

*Linked in the [STBG-UZA Project Scoring Criteria Dashboard](#).

RELATIONSHIP TO TIP

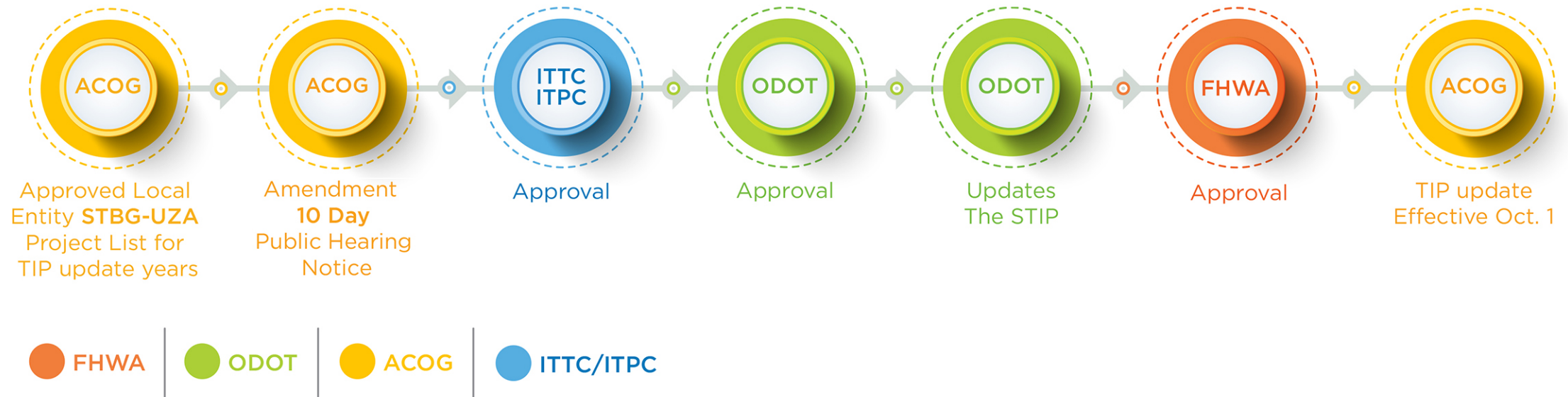
TRANSPORTATION IMPROVEMENT PROGRAM (TIP)



TIP UPDATES

TRANSPORTATION IMPROVEMENT PROGRAM (TIP)

- Updates to the TIP occur during the years between a new TIP
- Include the newly selected project list from the annual call for projects



FEDERAL SHARE

STBG-UZA FUNDS

- 80% federal | 20% local match
- 10% can be set aside for safety project funding at 100% federal
 - Only available for eligible safety projects (slide 12 - 13)
- Projects with 80% eligible and 100% eligible improvements should apply for 80% funds or separate the project into two
- There is a 10% cap on transit projects and a 10% cap on bike/ped projects (not a set aside)

FUNDING AVAILABLE: FFY 2022 – 2025*

FFY	TOTAL STBG-UZA (90%)	STBG-UZA (80%/20%)	STBG-UZA Safety (100%)
2022	\$22,085,106	\$19,876,595	\$2,208,511
2023	\$22,612,940	\$20,351,646	\$2,261,294
2024	\$23,153,389	\$20,838,050	\$2,315,339
2025	\$23,706,755	\$21,336,080	\$2,370,676

* This is an estimate based on 2020 allocations. Total funding amount will be confirmed by ODOT in January.

Projects submitted for FFY 2022 and 2023 will be locked for funding

OCARTS AREA MEMBERS

- A Map of all Functionally Classified Roads can be found on the [STBG-UZA Project Scoring Criteria Dashboard](#).



WHAT PROJECTS ARE ELIGIBLE?

WIDENING

- The addition of travel lanes, turn lanes, or widening of existing travel lanes to an existing facility, thus resulting in an increase in vehicle capacity
- Includes the widening of any bridges associated with the roadway improvement and railroad/highway grade separations associated with a widening project

NEW CONSTRUCTION

- New construction of a roadway on a new alignment
- An existing alignment on which no road surface (other than dirt or gravel) has previously existed
- Includes new bridge and intersection construction, if applicable

CONTINUED

CONTINUED: **WHAT PROJECTS ARE ELIGIBLE?**

INTERSECTION/SAFETY

- Widening at an intersection for turning lanes, installation of traffic signals (including school zone signals), improving sight distances, signal synchronization, Intelligent Transportation Systems, improvements on approaches to intersections, and installation of barrier curbs
- An intersection is defined as extending 500 feet from the intersection of the centerlines or 450 feet from the stop bars for each leg of the intersection, whichever is greater

RESURFACING, RECONSTRUCTION, REHABILITATION, OR RESTORATION

- Includes resurfacing, reconstruction, rehabilitation, or restoration
- Overlays with a minimum of an 8-year life as required by ODOT on existing pavements plus addition of material to bring shoulders to grade
- Also includes bridge resurfacing, reconstruction, rehabilitation, or restoration associated with a roadway improvement, or intersection resurfacing

CONTINUED

CONTINUED: **WHAT PROJECTS ARE ELIGIBLE?**

BRIDGES

- Replacement of a structurally deficient or functionally obsolete bridge or rehabilitation of an existing bridge to restore its structural integrity or to correct major safety defects, not associated with a roadway widening, new construction, or resurfacing project

INDEPENDENT BICYCLE AND PEDESTRIAN FACILITIES / PROJECTS

- Includes pedestrian walkways, bikeways, bike paths, and bike routes that are physically separated from motorized vehicular traffic by an open space or barrier
- Located within the roadway right-of-way or separate right-of-way, and intended principally for transportation rather than recreational use
- An independent bicycle project may include construction of bicycle facilities, signage, pavement markings, and bicycle parking facilities (This category does not include bikeway or walkway maintenance or any administrative costs)

CONTINUED

CONTINUED: **WHAT PROJECTS ARE ELIGIBLE?**

TRANSIT, PARK-AND-RIDE FACILITIES, HOV LANES

- Procurement of transit vehicles, exclusive lanes for transit/HOV, park-and-ride lots, signal preemptions for transit/HOV, and bus shelters

CARPOOL/VANPOOL

- Carpool/Vanpool Administration, Other

SAFETY PROJECTS (100% STBG-UZA)

- Traffic lights and control signalization
(new, upgrades, left turn signal phase, timing or interconnects)
- Pedestrian signals, pedestrian crosswalks, raised reflective pavement markers, school zone, school zone markings
- Traffic circles (roundabouts), safety rest areas, pavement markings

CONTINUED

- Commuter carpooling and vanpooling, rail-highway crossing closure
- Installation of traffic/warning/guide signs, guardrails, impact attenuators, concrete barrier end treatments, breakaway utility poles
- Priority control systems for emergency vehicles or transit vehicles at signalized intersections

SCORING SYSTEM

ENCOMPASS 2040 GOALS	SCORING METRIC	WIDENING	NEW CONSTRUCTION	INTERSECTION/SAFETY	R,R,R&R	BRIDGES	BIKE/PED	TRANSIT	SAFETY (100% FED)
Economic Strength	Supports a regional activity center	10	20	5	5	5	20	15	5
Safety and Security	Addresses safety at high crash severity locations	10	5	25	10	10	5	10	50
Equity and Options	Provides options for Environmental Justice (E.J.) areas or underserved communities	5	10	5	5	5	15	20	5
Healthy Communities	Improves air and water quality	10	15	10	5	5	10	10	
Connectivity	Integrates multiple transportation modes	15	15	5	5	10	30	15	
	Leverages other investments	5	5	5	5	5	5	5	

CONTINUED: **SCORING SYSTEM**

ENCOMPASS 2040 GOALS	SCORING METRIC	WIDENING	NEW CONSTRUCTION	INTERSECTION/SAFETY	R,R,R&R	BRIDGES	BIKE/PED	TRANSIT	SAFETY (100% FED)
System Performance	Addresses areas of high Volume to Capacity Ratio	20	10	15	5	5	5	5	25
	Addresses congested or unreliable corridors	5		5	5	5		5	5
	Contains strategies that reduce travel time delay	20	20	25	5		5	10	10
System Preservation	Improves infrastructure condition				50	50	5	5	
HIGHEST POSSIBLE SCORE		100	100	100	100	100	100	100	100

PROJECT SUBMISSION POLICIES

ALL SUBMITTED PROJECTS MUST COMPLY WITH THE FOLLOWING:

- Included in, or be consistent with, the Metropolitan Transportation Plan (MTP)
 - Major projects (capacity, reconstruction, or bridge) must be in the MTP
- **Local match funds** and other local expenses associated with the projects will be available
- Environmental clearance, right-of-way acquisition, and utility and encroachment clearance (for construction projects) **have been, or will be, accomplished** within the federal fiscal year that the STBG-UZA funds are made available for obligation (approved by ODOT and FHWA)

CONTINUED

CONTINUED: **PROJECT SUBMISSION POLICIES**

ALL SUBMITTED PROJECTS MUST COMPLY WITH THE FOLLOWING:

- Maximum amount of STBG funds authorized per project shall be capped at \$7,500,000
- No one entity may receive more than 56% of the region's funds in each TIP year
- Each entity is limited to a maximum of 20 total STBG project applications over the TIP timeframe
- No entity shall submit more than 10 projects for a single TIP year
- All projects which receive funding through the STBG-UZA program, cannot exceed the engineering estimate (plus inflation) amount stated in their application for the current Call For Projects year, nor request an amendment to exceed that amount
 - **Any project cost overruns will be borne by the sponsoring entity(ies)**

REQUIRED DOCUMENTS

PLEASE SUBMIT THE FOLLOWING DOCUMENTS BY 4 P.M., FRIDAY, OCTOBER 23, 2020

- A TIP eTRACKER application form for each project, which identifies the proposed funding source(s) and amount(s)
 - Applications submitted in last year's Call for Projects (and therefore have an eTRACKER application already created) will be open for editing
- A STBG-UZA Programming Resolution (with original signatures or a certified copy), adopted at a public meeting of its governing body, which describes the location of the project, type of improvement, total project cost, and source(s) of funds. Resolutions should note that projects are capped at the initial estimate plus inflation.
 - Sample resolutions are available upon request

CONTINUED

CONTINUED: **REQUIRED DOCUMENTS**

PLEASE SUBMIT THE FOLLOWING DOCUMENTS BY 4 P.M., FRIDAY, OCTOBER 23, 2020

- An itemized cost estimate (construction costs only) for each project must be:
 - Signed, stamped, and prepared by a registered professional engineer
 - Dated within 6 months of the upcoming TIP submission deadline
 - Costs associated with engineering, right-of-way acquisition, and utility relocation are not eligible
- A map of each proposed project showing its location, termini, street name(s), north arrow, and the names of nearby major streets
 - Alternatively, projects may be mapped in or uploaded to eTRACKER
- The appropriate Project Rating Worksheet(s) for each application requesting STBG-UZA funds

CONTINUED

CONTINUED: **REQUIRED DOCUMENTS**

PLEASE SUBMIT THE FOLLOWING DOCUMENTS BY 4 P.M., FRIDAY, OCTOBER 23, 2020

- ODOT Scoping Form
- Any supporting documentation listed in the STBG-UZA Grant Application Guidebook that supports the project score on the Project Rating Worksheet:
 - Traffic counts
 - PCI index or pavement coring sample results
 - Bridge sufficiency ratings
 - Applicable crash data

APPLICATION PROCESS

SCORING PROJECTS WITH MULTIPLE ASPECTS AND LOCATIONS

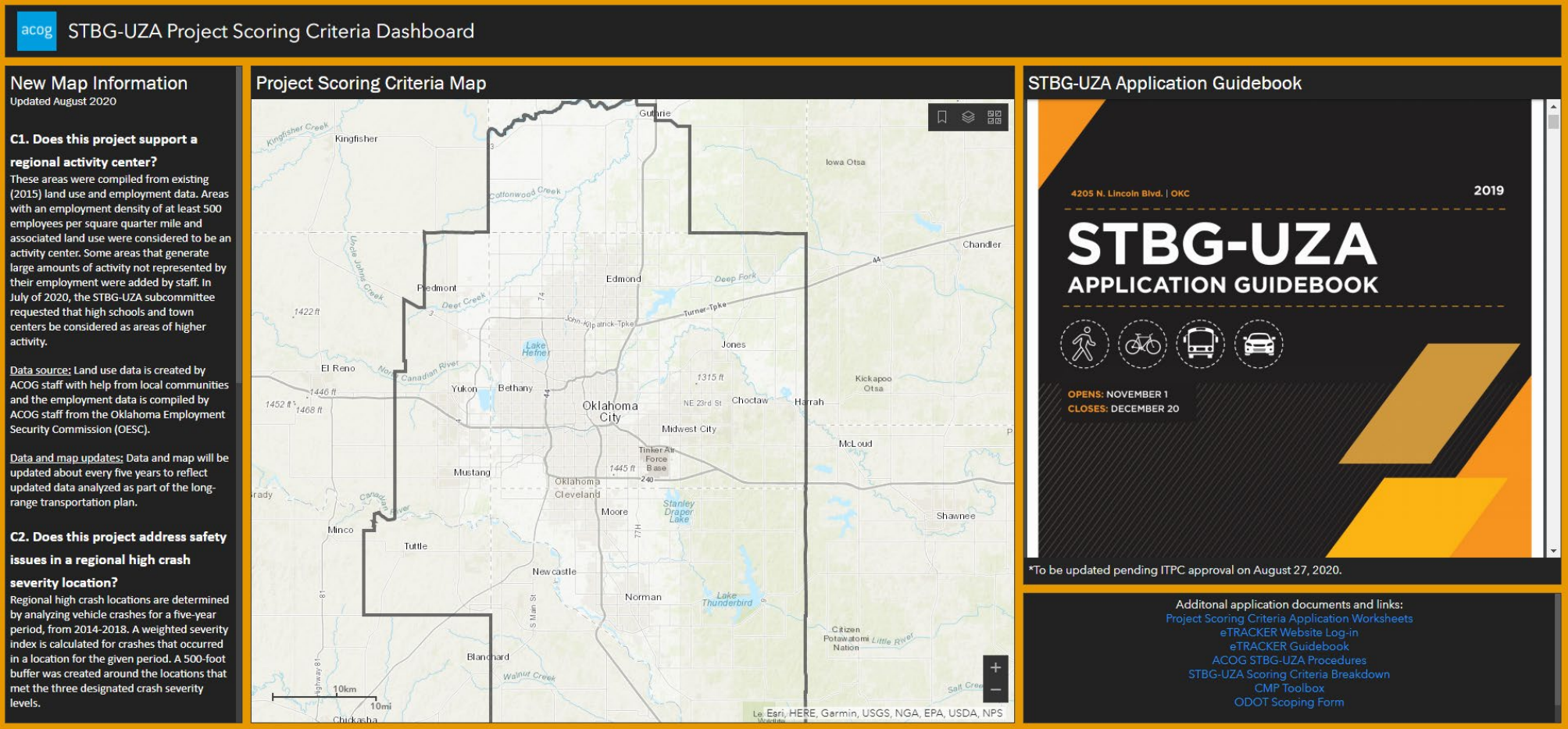
- Widening projects which extend significantly beyond an intersection distance will be considered a separate aspect, and not a part of the typical widening at an intersection for turn lanes
- If a project has **multiple aspects** such as widening and intersection improvements:
 - Project cost estimate should be itemized by the appropriate categories
 - Project scores from each category will be factored on a percentage basis (e.g. 40% widening, 60% intersection improvement)
- For projects that have multiple aspects in multiple locations: (i.e. safety projects that involve striping or improvements at multiple intersections around a city)
 - **Locations shall be clearly defined and mapped**
 - For the purposes of scoring, please identify the location of the greatest need (highest V/C ratio and highest crash severity), and supply documentation for that individual location

CONTINUED

SCORING SAFETY PROJECTS (100% federal)

- Please note, on slide 12 & 13, the types of projects eligible to receive safety funding at 100% federal
- Additionally, projects must be located in an area that has **had at least one preventable crash to be eligible**, unless the project is located within a school zone
- All school zone projects are eligible
- Eligible safety projects will compete separately from the 80/20 projects for funding in each TIP year

STBG-UZA PROJECT SCORING CRITERIA DASHBOARD



PROJECT SCORING CRITERIA WORKSHEET

	A	B	C	D	E
1		Lead Entity:			Widening Projects Eligible widening projects include the addition of travel lanes, turn lanes, or widening of existing travel lanes to an existing facility, thus resulting in an increase in vehicle capacity, including the widening of any bridges associated with the roadway improvement and railroad/highway grade separations associated with a widening project.
2		Contact Name:			
3		Phone:			
4		Email:			
5		Project Name			
6		Project JP #			
7		Project TIP #			
8			Total score	5.00	
9	Refer to the online criteria map within the STBG-UZA Project Scoring Criteria Dashboard for assistance scoring projects.				
10	Economic Strength				
11	C1	Does this project support a regional activity center?	Measure	Project is wholly or partially within the ¼ mile Activity Zone buffer	Projects wholly or partially within an Activity Zone receive full points.
12			subscore	5.00	
13	Safety and Security				
14	C2	Does this project address safety issues in a regional high crash severity location?	Measure		See page 13 in the Project Scoring Criteria Guidebook for a list of safety countermeasure strategies.
15			Strategy		
16			Other (please specify)		
17			subscore	0.00	
18	Equity and Options				
19	C3	Does this project increase access in an area of Environmental Justice Concern?	Measure		See page 14 in the Project Scoring Criteria Guidebook for a list of eligible E.J. project improvement types.
20			Strategy		
21			Other (please specify)		
22			subscore	0.00	
23	Healthy Communities				
24			Measure		Air and water quality strategies must account for

Widening
New Road Constr.
Intersection_Safety
R,R,R&R
Bridges
Bike_ped
Transit
Safety
+

SUBMISSION PROCESS

eTRACKER ONLINE SUBMISSION

1. LOG-IN AS A SPONSOR OR CFP USER*

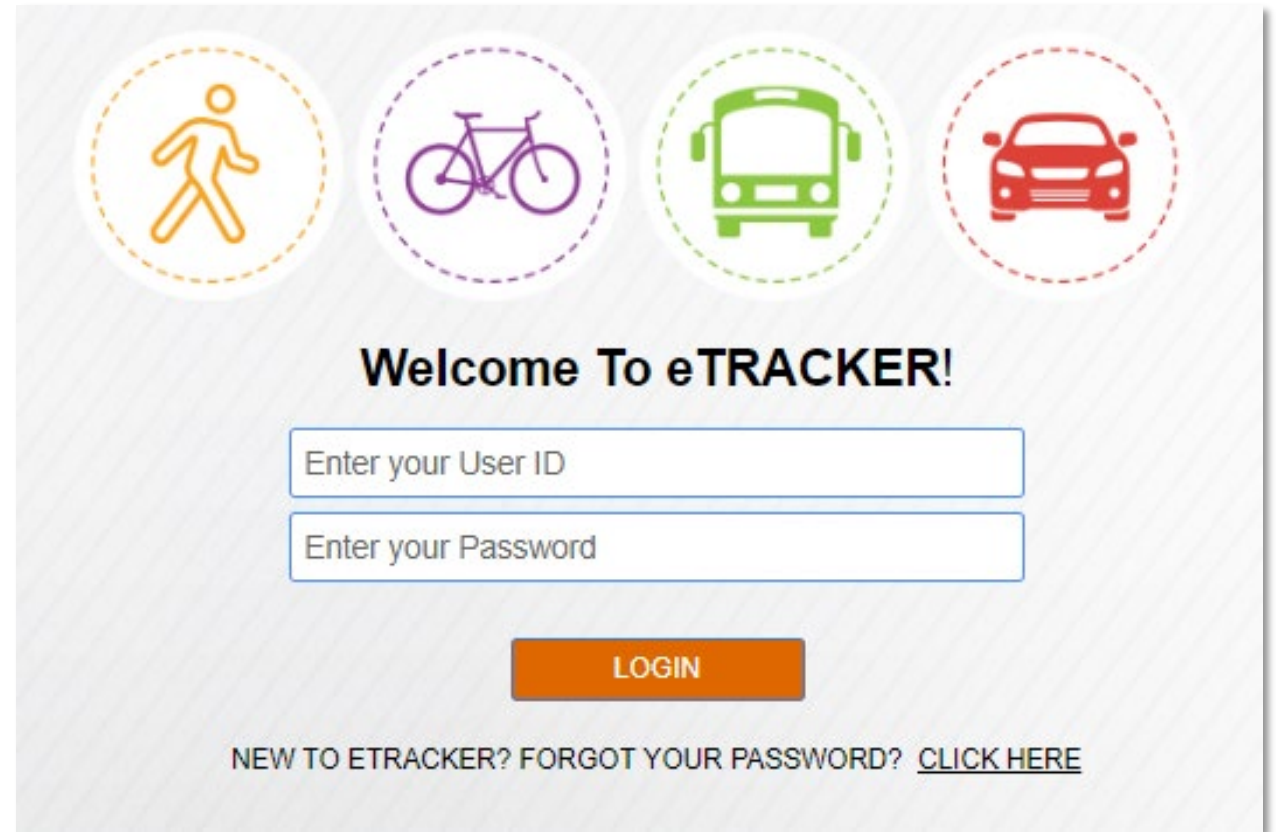
eTRACKER log-in:

<https://etracker.acogok.org/secure/login>

If you have not already signed up for a log-in, please sign up immediately to ensure timely approval and access to the system.

*See the [eTRACKER Guidebook](#) for information on Sponsor versus CFP User accounts.

CONTINUED

The image shows the eTRACKER login page. At the top, there are four circular icons with dashed borders: a yellow walking person, a purple bicycle, a green bus, and a red car. Below these icons, the text "Welcome To eTRACKER!" is displayed. Underneath, there are two input fields: "Enter your User ID" and "Enter your Password". Below the password field is an orange "LOGIN" button. At the bottom, there is a link that says "NEW TO ETRACKER? FORGOT YOUR PASSWORD? [CLICK HERE](#)".

Enter your User ID

Enter your Password

LOGIN

NEW TO ETRACKER? FORGOT YOUR PASSWORD? [CLICK HERE](#)

eTRACKER login page

CONTINUED: **APPLICATION PROCESS**
eTRACKER ONLINE SUBMISSION

1. LOG-IN AS A SPONSOR OR CFP USER*

acog

Project Tools

Reports

Other Tools

3

1

Search Project ID...

Advanced

New to ACOG eTRACKER? View the Tutorials to learn how to use the system. [dismiss]

In Progress Amendments

Amend TIP / Amend CFP

0 In Progress

0 In Denied

3 In Progress (CFP)

1 In Denied (CFP)

In Progress Adoptions

TIP Adoption

0 In Progress

0 In Denied

Submitted Amendments

0 Pending

0 Accepted

Submitted Adoptions

0 Pending

0 Accepted

CONTACT ACOG

1.28s

EMAIL ACOGTIPHELP@ECOINTERACTIVE.COM

eTRACKER 'Sponsor' home page

*See the [eTRACKER Guidebook](#) for information on Sponsor verses CFP User accounts.

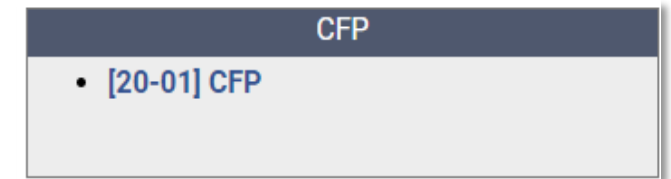
CONTINUED

CONTINUED: **APPLICATION PROCESS**
eTRACKER ONLINE SUBMISSION

1. LOG-IN AS A SPONSOR OR CFP USER*

2. SUBMITTING NEW PROJECTS:

Select the CFP (Call for Projects)
submission button



New project submission process

CONTINUED

CONTINUED: **APPLICATION PROCESS**
eTRACKER ONLINE SUBMISSION

1. LOG-IN AS A SPONSOR OR CFP USER*
2. SUBMITTING NEW PROJECTS

3. RESUBMITTING PROJECTS FROM LAST YEAR:

1. Select either '# In Progress' or '# In Denied'
2. Select project from list
3. Change Call for Projects from old CFP to new CFP

***ACOG STAFF WILL NOT SEE SUBMITTED PROJECTS IF THEY ARE NOT IN NEW CFP**

In Progress Amendments	
Amend TIP / Amend CFP ?	
0 In Progress	3 In Progress (CFP)
0 In Denied	1 In Denied (CFP)

CFP AMENDMENTS IN DENIED		
TIP ID	LEAD AGENCY	DOC
10842	City of Oklahoma City	22-01
11069	City of Oklahoma City	20-01

TIP ID: 10842

VERSION: 1

LAST MODIFIED BY: Hayden Harrison LAST MODIFIED DATE:

TIP Programming

Obligation

Map

Project IDS

Documents

Amendment History

Administrative Area

CALL FOR PROJECTS TIP ID

20-01 CFP 2021

20-01 CFP 2021

22-01 CFP 2022

ing links for additional guidance and to download required application documents:

STBG-UZA: ACOG's STBG-UZA Project Scoring Criteria Dashboard

Resubmitting projects from last year

CONTINUED

CONTINUED: APPLICATION PROCESS eTRACKER ONLINE SUBMISSION

1. LOG-IN AS A SPONSOR OR CFP USER*
2. SUBMITTING NEW PROJECTS
3. RESUBMITTING PROJECTS FROM LAST YEAR
4. ADD/CREATE NEW PROJECT FOR EACH APPLICATION, BE SURE TO IDENTIFY THE CORRECT TIP YEAR
5. FILL IN ALL REQUIRED INFORMATION FIELDS
 - Project Information
 - Proposed Funding Information
 - Project Questions

CONTINUED

Upload Project Documents

ADDING A NEW CFP PROJECT

Administrative Area

CALL FOR PROJECTS TIP ID
20-01 CFP 2020

For additional guidance and to download application documents, click on the links in new tab).

Project Information

PROJECT TITLE *Spell Check*
Resurfacing - SW 104th St. from S. May Ave. to S. Western Ave.

PROJECT DESCRIPTION *Spell Check*
Street resurfacing, 5 ft. sidewalk on the north side of SW 104th St. from S. May Ave. to S. Pennsylvania Ave. and ADA compliant wheelchair ramps, 1.90 miles

PRIMARY PROJECT TYPE
Road - Resurf

CAPACITY
No

TCM

LEAD AGENCY
City of Oklahoma City

COUNTY
Oklahoma

MUNICIPALITY
Oklahoma City

* MAP LINK WILL APPEAR AFTER YOU CLICK SAVE

SYSTEM	LOCATION TYPE	ROAD NAME	FROM	TO	DIST MILE(S)
Local Streets	Street Segment	SW 104th St	S May Ave	S Western Ave	1.90

Proposed Funding Information (\$0)

FFY (OCTOBER-SEPTEMBER)	FUND TYPE	PE	ROW	CON	CE	UT	TOTAL
2020	STBG - Urban			\$1,884,000			\$1,884,000
							\$0
FFY 2020							
	STBG - Urban	\$0	\$0	\$0	\$0	\$0	\$0
	STBG - Urban	\$0	\$0	\$1,884,000	\$0	\$0	\$1,884,000
	GRAND TOTAL	\$0	\$0	\$1,884,000	\$0	\$0	\$1,884,000

☒ ESTIMATED TOTAL PROJECT COST IS EQUAL TO TOTAL PROGRAMMED \$

Project Questions

☐ None of the questions below apply to this project

☒ Application completed, total points earned: 53.26

☐ Proximity to school, radius in miles:

☐ RR Crossing within limits

☐ Project is split from another project. The TIP ID is

☒ Pavement Maintenance/Rehabilitate/Reconstruct:

☐ Capital preventive maintenance (CPM)

☒ Repave road

Example project application

acog

CONTINUED: **APPLICATION PROCESS**
eTRACKER ONLINE SUBMISSION

- 1. LOG-IN AS A SPONSOR OR CFP USER*
- 2. SUBMITTING NEW PROJECTS
- 3. RESUBMITTING PROJECTS FROM LAST YEAR
- 4. ADD/CREATE NEW PROJECT FOR EACH APPLICATION, BE SURE TO IDENTIFY THE CORRECT TIP YEAR
- 5. FILL IN ALL REQUIRED INFORMATION FIELDS
- 6. AFTER SAVING (IF NEW PROJECT), MORE TABS WILL APPEAR AT THE TOP OF THE PAGE**

TIP ID: 10798

VERSION: 1

STATUS: In Progress - Application

LAST MODIFIED BY: test2

LAST MODIFIED DATE: 8/30/2018

TIP Programming

Obligation

Map

Project IDS

Documents

Amendment History

Administrative Area

Detail

CALL FOR PROJECTS

TIP ID

20-01 CFP 2020

For additional guidance and to download application document templates, view the [STBG-UZA Project Scoring Criteria Dashboard](#) (opens in new tab).

Project Information

PROJECT TITLE [Spell Check](#)

Reno: Midwest to Douglas - Resurfacing

PROJECT DESCRIPTION [Spell Check](#)

Reno: Midwest to Douglas - Resurfacing

PRIMARY PROJECT TYPE

Road - Resurf

CAPACITY

No

TCM

LEAD AGENCY

City of Oklahoma City

COUNTY

Oklahoma

MUNICIPALITY

Oklahoma City

SYSTEM

Local Streets

LOCATION TYPE

Street Segment

ROAD NAME

Reno

FROM

Midwest

TO

Douglas

DIST MILE(S)

1

Map

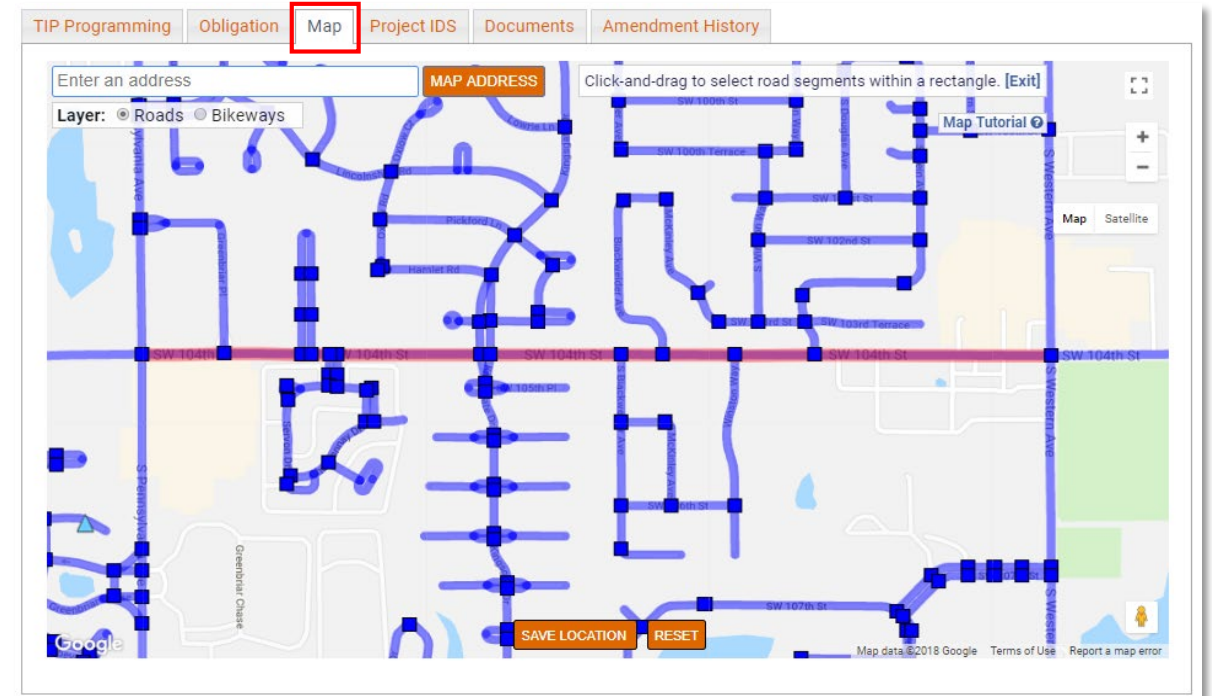
[ADD NEW LOCATION]

Additional project application tabs

CONTINUED

CONTINUED: **APPLICATION PROCESS**
eTRACKER ONLINE SUBMISSION

1. LOG-IN AS A SPONSOR OR CFP USER*
2. SUBMITTING NEW PROJECTS
3. RESUBMITTING PROJECTS FROM LAST YEAR
4. ADD/CREATE NEW PROJECT FOR EACH APPLICATION, BE SURE TO IDENTIFY THE CORRECT TIP YEAR
5. FILL IN ALL REQUIRED INFORMATION FIELDS
6. AFTER SAVING (IF NEW PROJECT), MORE TABS WILL APPEAR AT THE TOP OF THE PAGE
- 7. MAP PROJECT LOCATION(S) IN ETRACKER SYSTEM (IF APPLICABLE) - OR UPLOAD MAP**



Mapping feature

CONTINUED

CONTINUED: **APPLICATION PROCESS**
eTRACKER ONLINE SUBMISSION

- 1. LOG-IN AS A SPONSOR OR CFP USER*
- 2. SUBMITTING NEW PROJECTS
- 3. RESUBMITTING PROJECTS FROM LAST YEAR
- 4. ADD/CREATE NEW PROJECT FOR EACH APPLICATION, BE SURE TO IDENTIFY THE CORRECT TIP YEAR
- 5. FILL IN ALL REQUIRED INFORMATION FIELDS
- 6. AFTER SAVING (IF NEW PROJECT), MORE TABS WILL APPEAR AT THE TOP OF THE PAGE
- 7. MAP PROJECT LOCATION(S) IN ETRACKER SYSTEM (IF APPLICABLE) – OR UPLOAD MAP
- 8. UPLOAD ALL REQUIRED DOCUMENTATION**

CONTINUED

ZOOMED IN

TIP ProgrammingObligationMapProject IDSDocumentsAmendment History

Project Document

No Documents Uploaded To This Project.

Upload Project Documents

Enter A Description And Then Select The Document You Want To Upload By Clicking On The "Choose File" Button.

Document Date	Document Description (Optional)	Document Type	Filename
			Choose File
			Choose File
			Choose File
			Choose File
			Choose File
			Choose File

Upload Selected

TIP ProgrammingObligationMapProject IDSDocumentsAmendment History

Project Document

No Documents Uploaded To This Project.

Upload Project Documents

Enter A Description And Then Select The Document You Want To Upload By Clicking On The "Choose File" Button.

Document Date	Document Description (Optional)	Document Type	Filename
			Choose FileNo file chosen
			Choose FileNo file chosen
			Choose FileNo file chosen
			Choose FileNo file chosen
			Choose FileNo file chosen
			Choose FileNo file chosen

Upload Selected

Tab for uploading project documentation

CONTINUED: APPLICATION PROCESS

eTRACKER ONLINE SUBMISSION

1. LOG-IN AS A SPONSOR OR CFP USER*
2. SUBMITTING NEW PROJECTS
3. RESUBMITTING PROJECTS FROM LAST YEAR
4. ADD/CREATE NEW PROJECT FOR EACH APPLICATION, BE SURE TO IDENTIFY THE CORRECT TIP YEAR
5. FILL IN ALL REQUIRED INFORMATION FIELDS
6. AFTER SAVING (IF NEW PROJECT), MORE TABS WILL APPEAR AT THE TOP OF THE PAGE
7. MAP PROJECT LOCATION(S) IN ETRACKER SYSTEM (IF APPLICABLE) – OR UPLOAD MAP
8. UPLOAD ALL REQUIRED DOCUMENTATION
- 9. SELECT 'SAVE AND SUBMIT' WHEN FINISHED. A CONFIRMATION EMAIL WILL BE SENT**

ZOOMED IN

The screenshot displays the 'Change Reason' section of the eTracker application. A red box highlights the 'NEW PROJECT' radio button, which is selected. Below the radio buttons, the text 'NARRATIVE - LAST UPDATED: 10/22/2019 - [GUIDANCE](#)' is visible. A text area contains the following text: 'PROJECT CHANGES (FROM PREVIOUS VERSION): Local Match', '► Add funds in FFY 20 in CON for \$79,000', 'Congestion Management Air Quality', '► Add funds in FFY 20 in CON for \$200,000', and 'Total project cost \$279,000'. At the bottom right, three orange buttons are visible: 'Save', 'Save As Final', and 'Save and Submit'. A zoomed-in view of the 'Save and Submit' button is shown in a separate red box.

Saving and submitting a project

CALL FOR PROJECTS SCHEDULE

EVENT	DATE
Call for Projects workshop	08/28/2020 - 10:00 a.m. - 12:00 p.m.
Call for Projects open	09/1/2020 at 8:00 a.m.
Call for Projects closed	10/23/2020 at 4:00 p.m.
ACOG staff analysis	10/26/2020 - 1/1/2021
Special ITTC meeting	01/14/2021

DOCUMENT LINKS

All STBG-UZA documents can be found on the [STBG-UZA Project Scoring Criteria Dashboard](#)

QUESTIONS?

Hayden Harrison

Program Coordinator

Transportation Planning Services

Lauren Wood

Associate Planner

Transportation Planning Services

ASSOCIATION OF
CENTRAL OKLAHOMA
GOVERNMENTS

acog